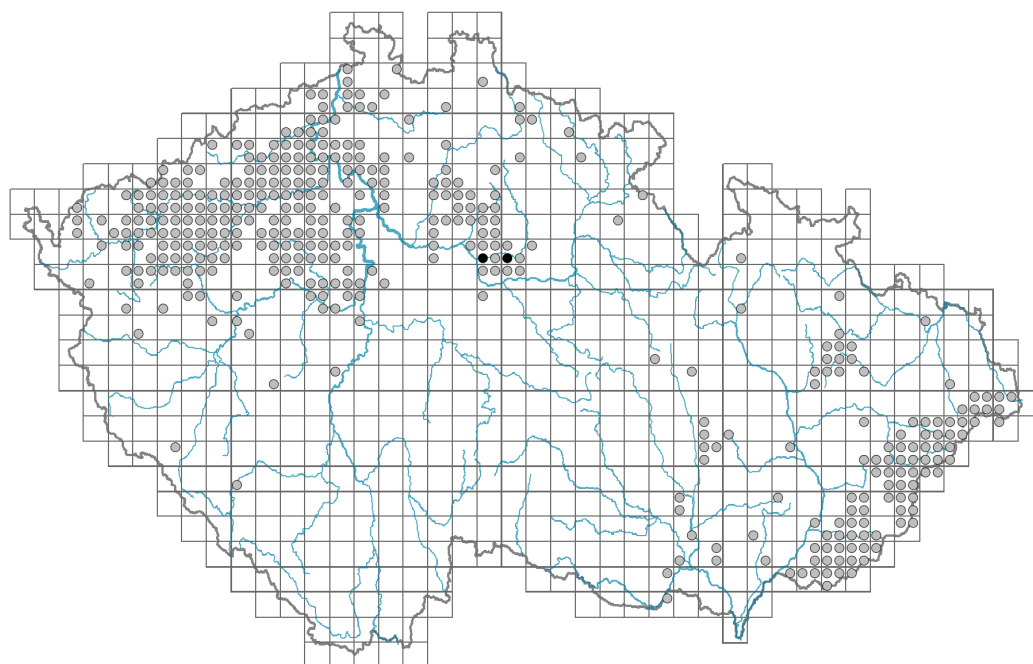


Cirsium eriophorum

Distribution



© Alen Moravec

Map info

● revised records

○ unrevised records

On the map are not visualized records without the coordinates and records marked as incorrect or doubtful.

Habitus and growth type

Height [m]: **0.5-1.5**

Growth form: **monocarpic perennial non-clonal herb**

Life form: **hemicryptophyte**

Life strategy: **C - competitor**

Life strategy (Pierce method based on leaf traits): **C**

Life strategy (Pierce method, C-score): **80.8 %**

Life strategy (Pierce method, S-score): **7.6 %**

Life strategy (Pierce method, R-score): **11.6 %**

Leaf

Leaf presence and metamorphosis: **leaves present, not modified**

Leaf arrangement (phyllotaxis): **alternate, rosulate**

Leaf shape: **simple - pinnately divided**

Stipules: **absent**

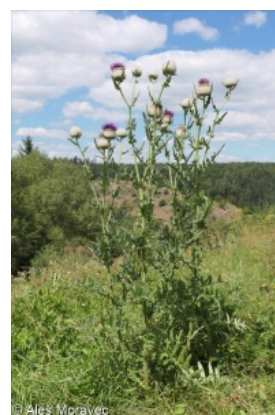
Petiole: **both present and absent**

Leaf life span: **evergreen**

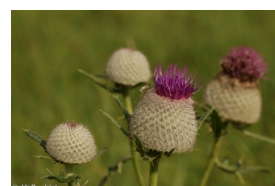
Leaf anatomy: **scleromorphic**

Flower

Flowering period [month]: **July-September**



© Alen Moravec



© Jiri Prochazka

Flowering phase: **8 Clematis vitalba-Galium sylvaticum (mid-summer)**

Flower colour: **red-violet**

Flower symmetry: **actinomorphic**

Perianth type: **calyx reduced, corolla present**

Perianth fusion: **fused**

Shape of the sympetalous corolla or syntepalous perianth: **tubular**

Calyx fusion: **pappus**

Inflorescence type: **corymbus ex anthodiis compositus**

Dicliny: **synoecious**

Generative reproduction type: **mixed mating**

Pollination syndrome: **insect-pollination**

Fruit, seed and dispersal

Fruit type: **dry fruit - achene/cypsela/samara**

Fruit colour: **brown**

Reproduction type: **only by seed/spores**

Dispersal unit (diaspore): **fruit, infrutescence or its part**

Dispersal strategy: **Epilobium (mainly anemochory and autochory)**

Myrmecochory: **myrmecochorous**

Belowground organs and clonality

Root metamorphosis: **primary storage root**

Storage organ: **primary storage root**

Shoot life span (cyclicality): **dicyclic or polycyclic shoots prevailing**

Primary root: **present**

Bud bank

Number of buds per shoot at the soil surface (root buds excluded): **5**

Number of buds per shoot at a depth of 0–10 cm (root buds excluded): **10**

Number of buds per shoot at a depth greater than 10 cm (root buds excluded): **0**

Size of the belowground bud bank (root buds excluded): **15**

Depth of the belowground bud bank (root buds excluded) [cm]: **4**

Number of buds per shoot at the soil surface (root buds included): **5**

Number of buds per shoot at a depth of 0–10 cm (root buds included): **10**

Number of buds per shoot at a depth greater than 10 cm (root buds included): **0**

Size of the belowground bud bank (root buds included): **15**

Depth of the belowground bud bank (root buds included) [cm]: **4**

Trophic mode

Parasitism and mycoheterotrophy: **autotrophic**

Carnivory: **non-carnivorous**

Symbiotic nitrogen fixation: **no nitrogen-fixing symbionts**

Karyology

Chromosome number (2n): **34**

Ploidy level (x): **2**



2C genome size [Mbp]: **3120.43**
 1Cx monoploid genome size [Mbp]: **1560.21**
 Genomic GC content: **39.4 %**

Taxon origin

Origin in the Czech Republic: **native**

Ecological indicator values

Ellenberg-type indicator values

Light indicator value: **8 - light plant, only exceptionally occurring at less than 40% of diffuse radiation incident in an open area**

Temperature indicator value: **6x - transition between values 5 and 7 (generalist)**

Moisture indicator value: **4 - transition between values 3 and 5**

Reaction indicator value: **8 - transition between values 7 and 9, occurring mostly in calcium-rich conditions**

Nutrient indicator value: **5 - occurring at moderately nutrient-rich sites, and less frequently at poor and rich sites**

Salinity indicator value: **0 - not salt tolerant, glycophyte**

Indicator values for disturbance

Whole-community disturbance frequency indicator value: **-0.23**

Herb layer disturbance frequency indicator value: **-0.23**

Whole-community disturbance severity indicator value: **0.26**

Herb layer disturbance severity indicator value: **0.3**

Whole-community structure based disturbance indicator value: **0.58**

Herb layer structure-based disturbance indicator value: **0.71**

Habitat and sociology

Occurrence in habitats

1 Vegetation of cliffs, screes and walls

1D Mobile calcareous screes: **1 - rare occurrence**

6 Meadows and mesic pastures

6A Mesic Arrhenatherum meadows: **2 - optimum**

6C Pastures and park grasslands: **1 - rare occurrence**

7 Acidophilous grasslands

7A Subalpine and montane acidophilous grasslands: **2 - optimum**

7B Submontane Nardus grasslands: **1 - rare occurrence**

8 Dry grasslands

8C Narrow-leaved sub-continental steppes: **2 - optimum**

8D Broad-leaved dry grasslands: **2 - optimum**

8F Thermophilous forest fringe vegetation: **1 - rare occurrence**

13 Anthropogenic vegetation

13D Perennial thermophilous ruderal vegetation: **2 - optimum**

Affinity to the forest environment

Affinity to the forest environment in Thermophyticum: **0 - taxon that does not spontaneously occur in Czech forests**



Affinity to the forest environment in Mesophyticum and Oreophyticum: **0 - taxon that does not spontaneously occur in Czech forests**

Ecological specialization indices

Ecological specialization index for all vegetation types: **4.9**

Ecological specialization index for non-forest vegetation: **4.9**

Colonization ability

Index of colonization success (ICS): **5**

Index of colonization potential (ICP): **8**

Optimum successional age [years]: **25**

Distribution and frequency

Floristic zone: **southern temperate, submeridional**

Floristic region: **Europe**

Continental degree: **5**

Distribution range extension along the continentality gradient: **3**

Elevational belt in the Czech Republic: **lowlands, colline belt, submontane belt, montane belt**

Expansive taxon in the region: **Carpathian Mesophyticum**

Occurrence frequency in the basic grid mapping cells and quadrants of the basic grid mapping cells: **181**

taxon.data.freq_in_quad: **392**

Commonness in vegetation plots from the Czech Republic

Occurrence frequency in vegetation plots: **0.1 %**

Occurrence frequency in vegetation plots with a cover above 5%: **6.8 %**

Occurrence frequency in vegetation plots with a cover above 25%: **0 %**

Occurrence frequency in vegetation plots with a cover above 50%: **0 %**

Mean percentage cover in vegetation plots: **2.6 %**

Maximum percentage cover in vegetation plots: **13 %**

Number of habitats with taxon occurrence in the Czech Republic

Number of narrow habitats in which the taxon occurs: **9**

Number of narrow habitats in which the taxon has its optimum: **5**

Number of broad habitats in which the taxon occurs: **5**

Number of broad habitats in which the taxon has its optimum: **4**

Threats and protection

Red List 2017 (national categories): **C3 - vulnerable taxon**

Red List 2017 (IUCN categories): **LC - least concern**

Legal protection: **not protected by law**