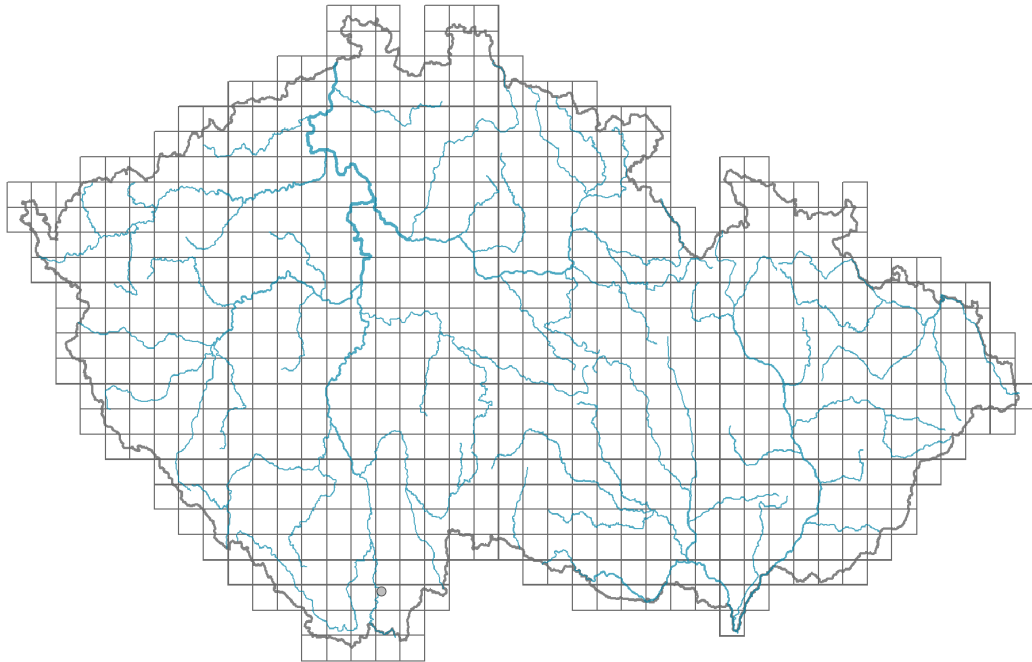


Euphorbia chamaesyce

Distribution



Habitus and growth type

Height [m]: **0.02-0.05**

Growth form: **annual herb**

Life form: **therophyte**

Leaf

Leaf presence and metamorphosis: **leaves present, not modified**

Leaf arrangement (phyllotaxis): **opposite**

Leaf shape: **simple - entire**

Stipules: **present**

Petiole: **present**

Flower

Flowering period [month]: **June-September**

Flower colour: **green**

Perianth type: **flower achlamydeous**

Inflorescence type: **pseudumbella e cyathiis composita**

Dicliny: **synoecious**

Pollination syndrome: **insect-pollination**



© Ondřej Pěnčík

Map info

● revised records

○ unrevised records

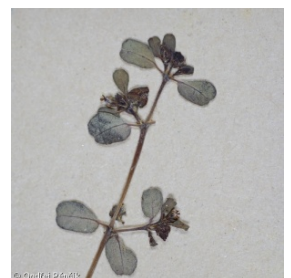
On the map are not visualized records without the coordinates and records marked as incorrect or doubtful.



© Ondřej Pěnčík



© Ondřej Pěnčík



© Ondřej Pěnčík

Fruit, seed and dispersal

Fruit type: **dry fruit - capsule**

Reproduction type: **only by seed/spores**

Dispersal unit (diaspore): **seed**

Dispersal strategy: **Allium (mainly autochory)**

Myrmecochory: **non-myrmecochorous (a)**

Trophic mode

Parasitism and mycoheterotrophy: **autotrophic**

Carnivory: **non-carnivorous**

Symbiotic nitrogen fixation: **no nitrogen-fixing symbionts**

Taxon origin

Origin in the Czech Republic: **absent in Czechia**

Ecological indicator values

Ellenberg-type indicator values

Light indicator value: **9 - full light plant, occurring only in fully irradiated places, not at less than 50% of diffuse radiation incident in an open area**

Temperature indicator value: **8 - transition between values 7 and 9**

Moisture indicator value: **2 - transition between values 1 and 3**

Reaction indicator value: **8 - transition between values 7 and 9, occurring mostly in calcium-rich conditions**

Nutrient indicator value: **5 - occurring at moderately nutrient-rich sites, and less frequently at poor and rich sites**

Salinity indicator value: **1 - salt tolerant, mostly on low-salt to salt-free soils, but occasionally on slightly salty soils**

Habitat and sociology

Affinity to the forest environment

Affinity to the forest environment in Thermophyticum: **0 - taxon that does not spontaneously occur in Czech forests**

Affinity to the forest environment in Mesophyticum and Oreophyticum: **0 - taxon that does not spontaneously occur in Czech forests**

Distribution and frequency

Floristic zone: **submeridional, meridional**

Floristic region: **Europe, Western Asia**

Distribution range extension along the continentality gradient: **8**

Occurrence frequency in the basic grid mapping cells and quadrants of the basic grid mapping cells: **2**

taxon.data.freq_in_quad: **2**

Threats and protection

Red List 2017 (national categories): **taxon is not on the Red List**

Red List 2017 (IUCN categories): **LC(NA) - least concern (taxon is not on the Red List)**

Legal protection: **not protected by law**