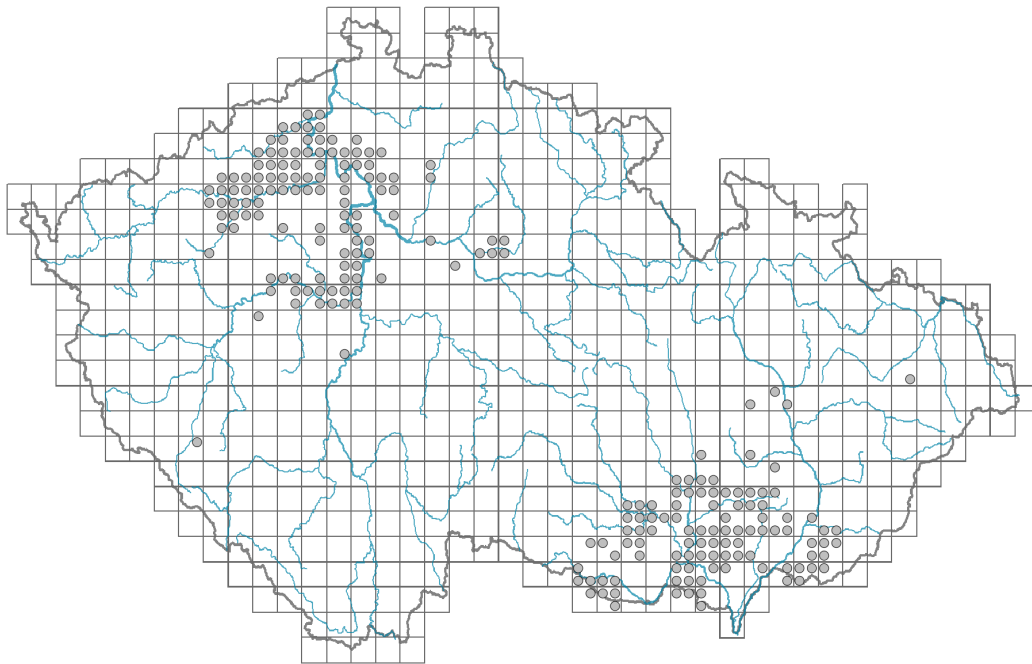


# *Galatella linosyris*

## Distribution



© Vladimír Nejšchleba

### Map info

● revised records

○ unrevised records

On the map are not visualized records without the coordinates and records marked as incorrect or doubtful.



Dana Widraová



© Vladimír Nejšchleba

## Habitus and growth type

Height [m]: **0.15-0.4**

Growth form: **clonal herb**

Life form: **hemicryptophyte**

Life strategy: **CSR - competitor/stress-tolerator/ruderal**

Life strategy (Pierce method based on leaf traits): **S/SR**

Life strategy (Pierce method, C-score): **6.9 %**

Life strategy (Pierce method, S-score): **78.2 %**

Life strategy (Pierce method, R-score): **15 %**

## Leaf

Leaf presence and metamorphosis: **leaves present, not modified**

Leaf arrangement (phyllotaxis): **alternate**

Leaf shape: **simple - entire**

Stipules: **absent**

Petiole: **absent**

Leaf life span: **summer green**

Leaf anatomy: **scleromorphic, mesomorphic**

## Flower

Flowering period [month]: **July-September**

Flowering phase: **8 Clematis vitalba-Galium sylvaticum (mid-summer)**

Flower colour: **yellow**

Flower symmetry: **actinomorphic**

Perianth type: **calyx reduced, corolla present**

Perianth fusion: **fused**

Shape of the sympetalous corolla or syntepalous perianth: **tubular**

Calyx fusion: **pappus**

Inflorescence type: **corymbothsus ex anthodiis compositus**

Dicliny: **synoecious**

Generative reproduction type: **allogamy self-incompatibility, facultative allogamy**

Pollination syndrome: **insect-pollination, geitonogamy**

## Fruit, seed and dispersal

Fruit type: **dry fruit - achene/cypsela/samara**

Fruit colour: **brown**

Reproduction type: **by seed/spores and vegetatively**

Dispersal unit (diaspore): **fruit, infrutescence or its part**

Dispersal strategy: **Epilobium (mainly anemochory and autochory)**

Myrmecochory: **probably non-myrmecochorous nv**

## Belowground organs and clonality

Shoot metamorphosis: **rhizome**

Storage organ: **rhizome**

Type of clonal growth organ: **hypogeogenous rhizome**

Freely dispersible organs of clonal growth: **absent**

Shoot life span (cyclicality): **monocyclic shoots prevailing**

Branching type of stem-derived organs of clonal growth: **sympodial**

Primary root: **absent**

Persistence of the clonal growth organ [year]: **2**

Number of clonal offspring: **2.7**

Lateral spreading distance by clonal growth [m]: **0.09**

Clonal index: **4**

## Bud bank

Number of buds per shoot at the soil surface (root buds excluded): **5**

Number of buds per shoot at a depth of 0–10 cm (root buds excluded): **12**

Number of buds per shoot at a depth greater than 10 cm (root buds excluded): **0**

Size of the belowground bud bank (root buds excluded): **17**

Depth of the belowground bud bank (root buds excluded) [cm]: **4**

Number of buds per shoot at the soil surface (root buds included): **5**

Number of buds per shoot at a depth of 0–10 cm (root buds included): **12**

Number of buds per shoot at a depth greater than 10 cm (root buds included): **0**

Size of the belowground bud bank (root buds included): **17**

Depth of the belowground bud bank (root buds included) [cm]: **4**

## Trophic mode

Parasitism and mycoheterotrophy: **autotrophic**



© Pavel Veselý



© Dana Michalová



© Vladimír Nejšlechta



© Milan Chytrý

Carnivory: **non-carnivorous**

Symbiotic nitrogen fixation: **no nitrogen-fixing symbionts**

## Karyology

Chromosome number (2n): **18 (36)**

Ploidy level (x): **2 (4)**

2C genome size [Mbp]: **8421.02**

1Cx monoploid genome size [Mbp]: **4210.51**

Genomic GC content: **39.3 %**

## Taxon origin

Origin in the Czech Republic: **native**

## Ecological indicator values

Ellenberg-type indicator values

Light indicator value: **8 - light plant, only exceptionally occurring at less than 40% of diffuse radiation incident in an open area**

Temperature indicator value: **7 - heat indicator, occurring in relatively warm lowlands**

Moisture indicator value: **2 - transition between values 1 and 3**

Reaction indicator value: **8 - transition between values 7 and 9, occurring mostly in calcium-rich conditions**

Nutrient indicator value: **3 - occurring at nutrient-poor sites more frequently than at average sites and exceptionally at rich sites**

Salinity indicator value: **0 - not salt tolerant, glycophyte**

Indicator values for disturbance

Whole-community disturbance frequency indicator value: **-0.28**

Herb layer disturbance frequency indicator value: **-0.28**

Whole-community disturbance severity indicator value: **0.2**

Herb layer disturbance severity indicator value: **0.23**

Whole-community structure based disturbance indicator value: **0.49**

Herb layer structure-based disturbance indicator value: **0.6**

## Habitat and sociology

Occurrence in habitats

1 Vegetation of cliffs, screes and walls

1D Mobile calcareous screes: **1 - rare occurrence**

8 Dry grasslands

8A Hercynian dry grasslands on rock outcrops: **2 - optimum**

8B Submediterranean dry grasslands on rock outcrops: **1 - rare occurrence**

8C Narrow-leaved sub-continental steppes: **2 - optimum**

8D Broad-leaved dry grasslands: **2 - optimum**

8F Thermophilous forest fringe vegetation: **2 - optimum**

11 Heathlands and scrub



11L Tall mesic and xeric shrub: **1 - rare occurrence**

11N Low xeric scrub: **2 - optimum**

12 Forests

12H Peri-Alpidic basiphilous thermophilous oak forests: **1 - rare occurrence**

12W Pine and larch plantations: **1 - rare occurrence**

Affinity to the forest environment

Affinity to the forest environment in Thermophyticum: **2.2 - taxon occurring partly in the forest, but mainly in open vegetation**

Diagnostic taxon

Diagnostic taxon of classes: [TH Festuco-Brometea](#)

Diagnostic taxon of alliances: [THE Cirsio-Brachypodium pinnati](#)

Diagnostic taxon of associations: [THD05 Stipetum tirsae](#), [THD06 Astragalo exscapio-Crambetum tatariae](#), [THE03 Polygalo majoris-Brachypodium pinnati](#)

Constant taxon

Constant taxon of associations: [THE03 Polygalo majoris-Brachypodium pinnati](#)

Ecological specialization indices

Ecological specialization index for all vegetation types: **5.4**

Ecological specialization index for non-forest vegetation: **5.4**

Ecological specialization index for forest vegetation: **5.4**

Colonization ability

Index of colonization success (ICS): **3**

Index of colonization potential (ICP): **1**

Optimum successional age [years]: **75**

## Distribution and frequency

Floristic zone: **northern temperate, southern temperate, submeridional**

Floristic region: **Europe**

Continental degree: **6**

Distribution range extension along the continentality gradient: **5**

Elevational belt in the Czech Republic: **lowlands, colline belt**

Occurrence frequency in the basic grid mapping cells and quadrants of the basic grid mapping cells: **100**

taxon.data.freq\_in\_quad: **217**

Commonness in vegetation plots from the Czech Republic

Occurrence frequency in vegetation plots: **0.6 %**

Occurrence frequency in vegetation plots with a cover above 5%: **17.6 %**

Occurrence frequency in vegetation plots with a cover above 25%: **3.6 %**

Occurrence frequency in vegetation plots with a cover above 50%: **0 %**

Mean percentage cover in vegetation plots: **5.2 %**

Maximum percentage cover in vegetation plots: **38 %**

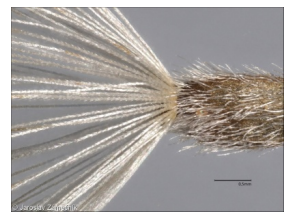
Number of habitats with taxon occurrence in the Czech Republic

Number of narrow habitats in which the taxon occurs: **10**

Number of narrow habitats in which the taxon has its optimum: **5**

Number of broad habitats in which the taxon occurs: **4**

Number of broad habitats in which the taxon has its optimum: **2**



## Threats and protection

Red List 2017 (national categories): **C3 - vulnerable taxon**

Red List 2017 (IUCN categories): **NT - near threatened**

Legal protection: **vulnerable taxon**

