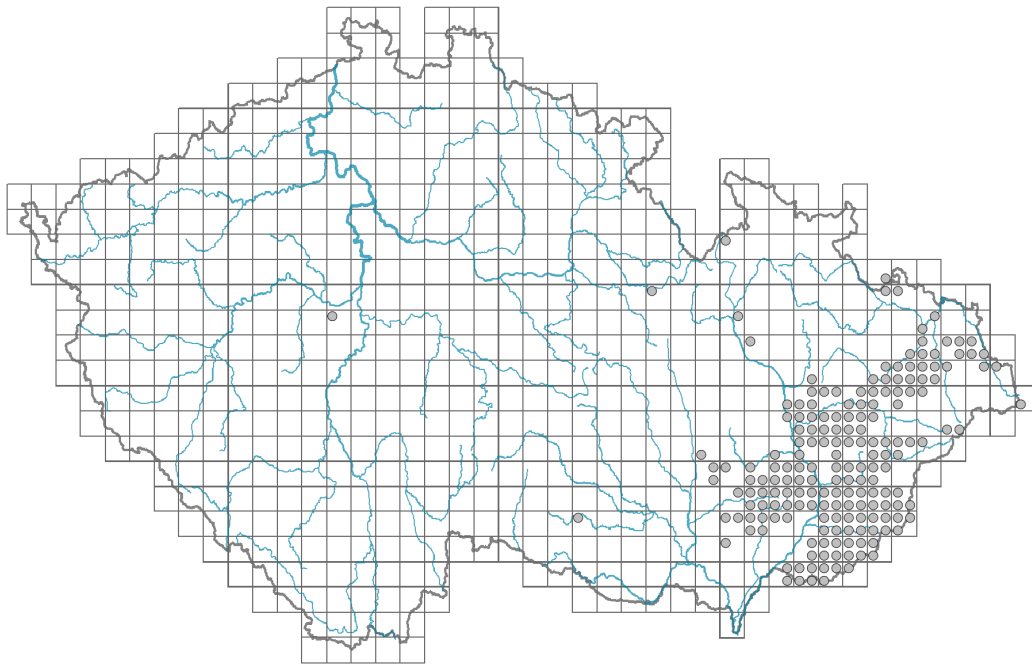


Hacquetia epipactis

Distribution



© Pavel Veselý

Map info

● revised records

○ unrevised records

On the map are not visualized records without the coordinates and records marked as incorrect or doubtful.



© Pavel Veselý

Habitus and growth type

Height [m]: **0.15-0.25**

Growth form: **clonal herb**

Life form: **hemicryptophyte**

Life strategy: **CSR - competitor/stress-tolerator/ruderal**

Leaf

Leaf presence and metamorphosis: **leaves present, not modified**

Leaf arrangement (phyllotaxis): **rosulate**

Leaf shape: **simple - palmately divided**

Stipules: **absent**

Petiole: **present**

Leaf life span: **summer green**

Leaf anatomy: **hygromorphic**

Flower

Flowering period [month]: **April-May**

Flower colour: **yellow**

Flower symmetry: **actinomorphic**

Perianth type: **calyx reduced, corolla present**

Perianth fusion: **free**



© Pavel Veselý



© Pavel Veselý

Calyx fusion: **aposepalous**
 Inflorescence type: **umbella**
 Generative reproduction type: **facultative allogamy**
 Pollination syndrome: **insect-pollination, geitonogamy**



Fruit, seed and dispersal

Fruit type: **dry fruit - cremocarp**
 Fruit colour: **brown, black**
 Reproduction type: **by seed/spores and vegetatively**
 Dispersal unit (diaspore): **fruit, infrutescence or its part**
 Dispersal strategy: **Allium (mainly autochory)**
 Myrmecochory: **non-myrmecochorous (b)**



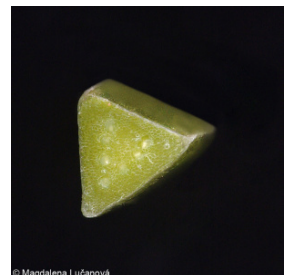
Belowground organs and clonality

Shoot metamorphosis: **rhizome**
 Storage organ: **rhizome**
 Type of clonal growth organ: **epigeogenous rhizome**
 Freely dispersible organs of clonal growth: **absent**
 Shoot life span (cyclicality): **dicyclic or polycyclic shoots prevailing**
 Branching type of stem-derived organs of clonal growth: **sympodial**
 Primary root: **absent**
 Persistence of the clonal growth organ [year]: **4**
 Number of clonal offspring: **1**
 Lateral spreading distance by clonal growth [m]: **0.01**
 Clonal index: **3**



Bud bank

Number of buds per shoot at the soil surface (root buds excluded): **5**
 Number of buds per shoot at a depth of 0–10 cm (root buds excluded): **15**
 Number of buds per shoot at a depth greater than 10 cm (root buds excluded): **0**
 Size of the belowground bud bank (root buds excluded): **20**
 Depth of the belowground bud bank (root buds excluded) [cm]: **4**
 Number of buds per shoot at the soil surface (root buds included): **5**
 Number of buds per shoot at a depth of 0–10 cm (root buds included): **15**
 Number of buds per shoot at a depth greater than 10 cm (root buds included): **0**
 Size of the belowground bud bank (root buds included): **20**
 Depth of the belowground bud bank (root buds included) [cm]: **4**



Trophic mode

Parasitism and mycoheterotrophy: **autotrophic**
 Carnivory: **non-carnivorous**
 Symbiotic nitrogen fixation: **no nitrogen-fixing symbionts**

Karyology

Chromosome number (2n): **16**
 Ploidy level (x): **2**

2C genome size [Mbp]: **2692.39**
 1Cx monoploid genome size [Mbp]: **1346.19**
 Genomic GC content: **39.4 %**

Taxon origin

Origin in the Czech Republic: **native**

Ecological indicator values

Ellenberg-type indicator values

Light indicator value: **4 - transition between values 3 and 5**

Temperature indicator value: **6 - transition between values 5 and 7**

Moisture indicator value: **5 - indicator of fresh soils, focus on soils of average moisture, missing on wet and on soils that frequently dry out**

Reaction indicator value: **7 - indicator of slightly acidic to slightly basic conditions, never occurring in very acidic conditions**

Nutrient indicator value: **6 - transition between values 5 and 7**

Salinity indicator value: **0 - not salt tolerant, glycophyte**

Indicator values for disturbance

Whole-community disturbance frequency indicator value: **-1.99**

Herb layer disturbance frequency indicator value: **-0.69**

Whole-community disturbance severity indicator value: **0.22**

Herb layer disturbance severity indicator value: **0.04**

Whole-community structure based disturbance indicator value: **0.06**

Herb layer structure-based disturbance indicator value: **0.15**

Habitat and sociology

Occurrence in habitats

8 Dry grasslands

8F Thermophilous forest fringe vegetation: **1 - rare occurrence**

11 Heathlands and scrub

11L Tall mesic and xeric shrub: **1 - rare occurrence**

11R Scrub and pioneer woodland of forests clearings: **1 - rare occurrence**

12 Forests

12B Alluvial forests: **1 - rare occurrence**

12C Oak-hornbeam forests: **2 - optimum**

12D Ravine forests: **1 - rare occurrence**

12E Herb-rich beech forests: **2 - optimum**

12U Plantations of broad-leaved non-native trees: **1 - rare occurrence**

13 Anthropogenic vegetation

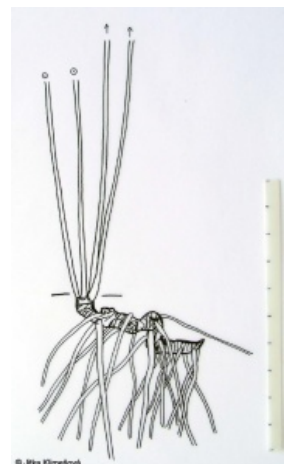
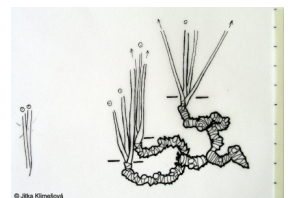
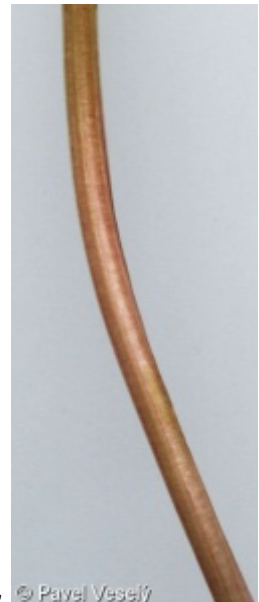
13E Perennial nitrophilous herbaceous vegetation of mesic sites: **1 - rare occurrence**

13F Herbaceous vegetation of forests clearings and Rubus scrub: **1 - rare occurrence**

Affinity to the forest environment

Affinity to the forest environment in Thermophyticum: **1.1 - taxon occurring mainly in the closed forest**

Affinity to the forest environment in Mesophyticum and Oreophyticum: **1.1 - taxon**



occurring mainly in the closed forest

Diagnostic taxon

Diagnostic taxon of alliances: [LBB Carpinion betuli](#)

Diagnostic taxon of associations: [LBB03 Carici pilosae-Carpinetum betuli](#), [LBC03 Carici pilosae-Fagetum sylvaticae](#)

Dominant taxon

Dominant taxon of associations: [LBB03 Carici pilosae-Carpinetum betuli](#)

Ecological specialization indices

Ecological specialization index for all vegetation types: **6.2**

Ecological specialization index for forest vegetation: **6.3**

Colonization ability

Index of colonization success (ICS): **1**

Index of colonization potential (ICP): **1**

Distribution and frequency

Floristic zone: **southern temperate, submeridional**

Floristic region: **Europe**

Elevational belt in the Czech Republic: **colline belt, submontane belt, montane belt**

Occurrence frequency in the basic grid mapping cells and quadrants of the basic grid mapping cells: 75

taxon.data.freq_in_quad: 184

Commonness in vegetation plots from the Czech Republic

Occurrence frequency in vegetation plots: **0.4 %**

Occurrence frequency in vegetation plots with a cover above 5%: **31.7 %**

Occurrence frequency in vegetation plots with a cover above 25%: **11.7 %**

Occurrence frequency in vegetation plots with a cover above 50%: **0.8 %**

Mean percentage cover in vegetation plots: **8.5 %**

Maximum percentage cover in vegetation plots: **63 %**

Number of habitats with taxon occurrence in the Czech Republic

Number of narrow habitats in which the taxon occurs: **10**

Number of narrow habitats in which the taxon has its optimum: **2**

Number of broad habitats in which the taxon occurs: **4**

Number of broad habitats in which the taxon has its optimum: **1**

Threats and protection

Red List 2017 (national categories): **C4a - near threatened taxon**

Red List 2017 (IUCN categories): **LC - least concern**

Legal protection: **not protected by law**