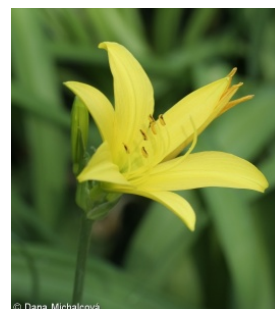
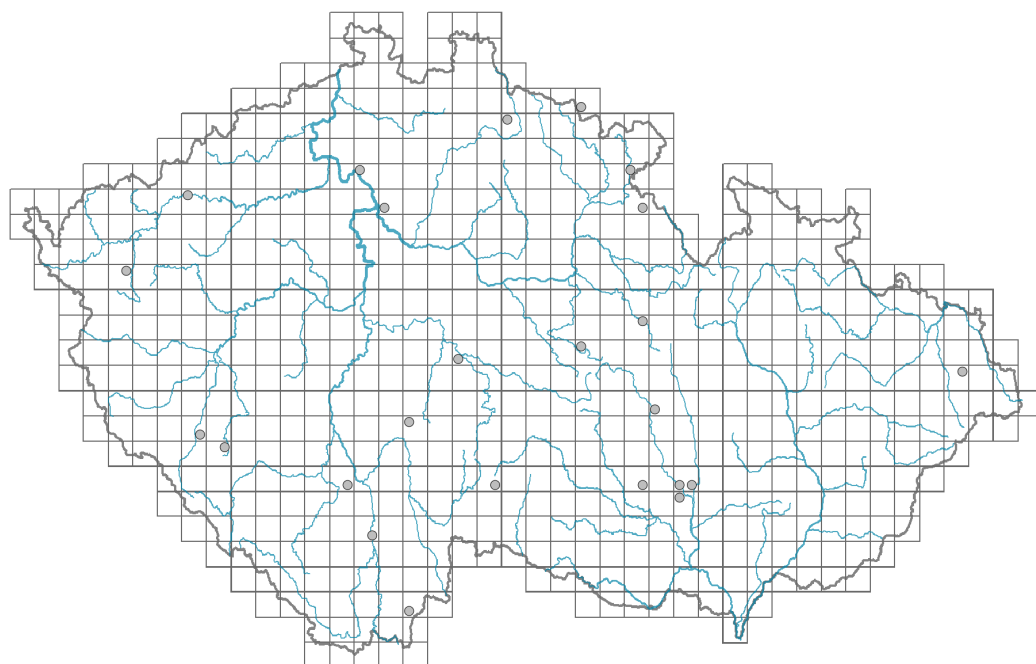


Hemerocallis lilioasphodelus

Distribution



© Dana Michalcová

Map info

● revised records

○ unrevised records

On the map are not visualized records without the coordinates and records marked as incorrect or doubtful.



© Dana Holubová

Habitus and growth type

Height [m]: **0.5-1**

Growth form: **clonal herb**

Life form: **geophyte**

Life strategy: **C - competitor**

Leaf

Leaf presence and metamorphosis: **leaves present, not modified**

Leaf arrangement (phyllotaxis): **rosulate**

Leaf shape: **simple - entire**

Stipules: **absent**

Petiole: **absent**

Leaf life span: **summer green**

Flower

Flowering period [month]: **June**

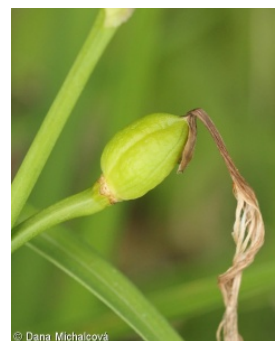
Flower colour: **yellow**

Flower symmetry: **actinomorphic**

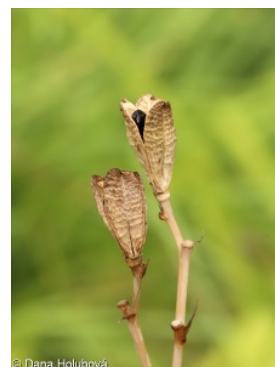
Perianth type: **homochlamydeous**

Perianth fusion: **fused**

Shape of the sympetalous corolla or syntepalous perianth: **funnel-shaped**



© Dana Michalcová



© Dana Holubová

Inflorescence type: **bostryx**
 Dicliny: **synoecious**
 Generative reproduction type: **alogamy self-incompatibility**
 Pollination syndrome: **insect-pollination**

Fruit, seed and dispersal

Fruit type: **dry fruit - capsule**
 Fruit colour: **brown**
 Reproduction type: **only vegetatively**
 Dispersal strategy: **Zea (no dispersal)**
 Myrmecochory: **myrmecochorous nv**



Belowground organs and clonality

Shoot metamorphosis: **rhizome**
 Root metamorphosis: **secondary storage root**
 Storage organ: **rhizome, secondary storage root**
 Type of clonal growth organ: **epigeogenous rhizome**
 Freely dispersible organs of clonal growth: **absent**
 Shoot life span (cyclicality): **dicyclic or polycyclic shoots prevailing**
 Branching type of stem-derived organs of clonal growth: **sympodial**
 Primary root: **absent**
 Persistence of the clonal growth organ [year]: **2**
 Number of clonal offspring: **6**
 Lateral spreading distance by clonal growth [m]: **0.01**
 Clonal index: **4**



Bud bank

Number of buds per shoot at the soil surface (root buds excluded): **5**
 Number of buds per shoot at a depth of 0–10 cm (root buds excluded): **15**
 Number of buds per shoot at a depth greater than 10 cm (root buds excluded): **0**
 Size of the belowground bud bank (root buds excluded): **20**
 Depth of the belowground bud bank (root buds excluded) [cm]: **4**
 Number of buds per shoot at the soil surface (root buds included): **5**
 Number of buds per shoot at a depth of 0–10 cm (root buds included): **15**
 Number of buds per shoot at a depth greater than 10 cm (root buds included): **0**
 Size of the belowground bud bank (root buds included): **20**
 Depth of the belowground bud bank (root buds included) [cm]: **4**

Trophic mode

Parasitism and mycoheterotrophy: **autotrophic**
 Carnivory: **non-carnivorous**
 Symbiotic nitrogen fixation: **no nitrogen-fixing symbionts**

Taxon origin

Origin in the Czech Republic: **neophyte**
 Invasion status: **casual**

Geographic origin: **Asia**

Year of the first record in the wild: **1883**

Period of introduction: **Late Modern Period (1800-1950)**

Introduction pathway: **intentional - ornamental**

Habitat and sociology

Affinity to the forest environment

Affinity to the forest environment in Thermophyticum: **0 - taxon that does not spontaneously occur in Czech forests**

Affinity to the forest environment in Mesophyticum and Oreophyticum: **0 - taxon that does not spontaneously occur in Czech forests**

Distribution and frequency

Floristic zone: **northern temperate, southern temperate, submeridional**

Floristic region: **Europe, Asia, Siberia**

Occurrence frequency in the basic grid mapping cells and quadrants of the basic grid mapping cells: 23

taxon.data.freq_in_quad: 24

Threats and protection

Red List 2017 (national categories): **taxon is not on the Red List**

Red List 2017 (IUCN categories): **LC(NA) - least concern (taxon is not on the Red List)**

Legal protection: **not protected by law**