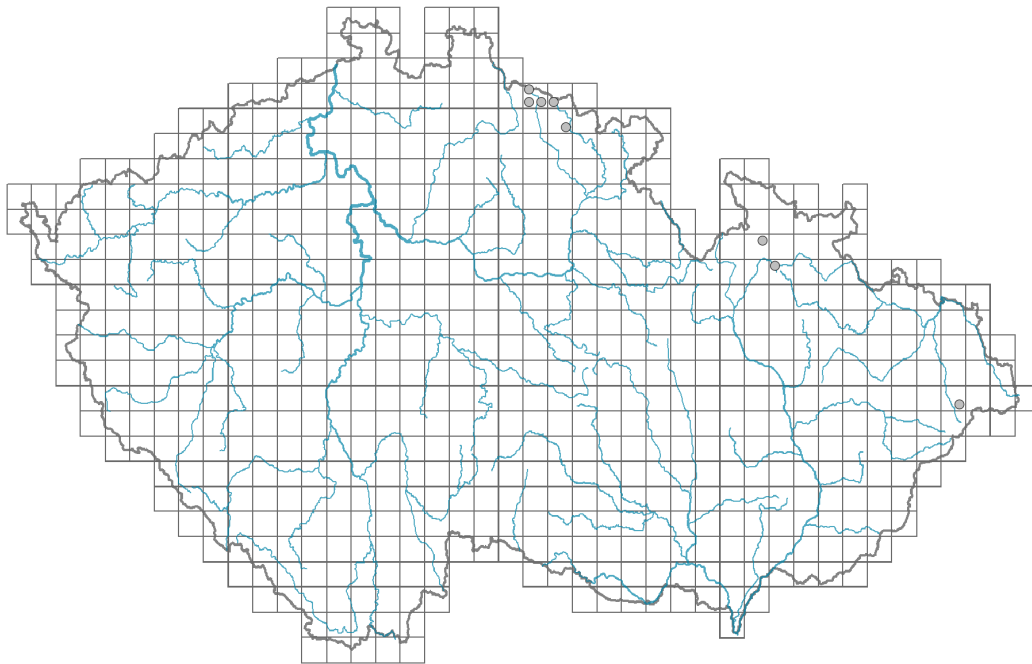


Hieracium inuloides

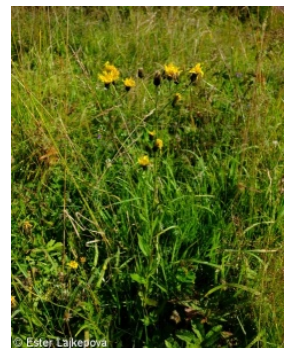
Distribution



Map info

- revised records
- unrevised records

On the map are not visualized records without the coordinates and records marked as incorrect or doubtful.



Habitus and growth type

Height [m]: **0.3-1**

Growth form: **clonal herb**

Life form: **hemicryptophyte**

Life strategy: **CS - competitor/stress-tolerator**

Leaf

Leaf presence and metamorphosis: **leaves present, not modified**

Leaf arrangement (phyllotaxis): **alternate, rosulate**

Leaf shape: **simple - entire**

Stipules: **absent**

Petiole: **mainly absent**

Leaf life span: **summer green**

Flower

Flowering period [month]: **July-September**

Flower colour: **yellow**

Flower symmetry: **zygomorphic**

Perianth type: **calyx reduced, corolla present**

Perianth fusion: **fused**

Shape of the sympetalous corolla or syntepalous perianth: **ligulate**

Calyx fusion: **pappus**
Inflorescence type: **anthella ex anthodiis composita**
Dicliny: **synoecious**
Pollination syndrome: **insect-pollination, selfing**

Fruit, seed and dispersal

Fruit type: **dry fruit - achene/cypsela/samara**
Fruit colour: **brown**
Reproduction type: **by seed/spores and vegetatively**
Dispersal unit (diaspore): **fruit, infrutescence or its part**
Dispersal strategy: **Epilobium (mainly anemochory and autochory)**
Myrmecochory: **probably non-myrmecochorous**

Belowground organs and clonality

Shoot metamorphosis: **rhizome**
Storage organ: **rhizome**

Trophic mode

Parasitism and mycoheterotrophy: **autotrophic**
Carnivory: **non-carnivorous**
Symbiotic nitrogen fixation: **no nitrogen-fixing symbionts**

Karyology

Chromosome number (2n): **27**
Ploidy level (x): **3**
2C genome size [Mbp]: **10416.79**
1Cx monoploid genome size [Mbp]: **3472.26**
Genomic GC content: **40.9 %**

Taxon origin

Origin in the Czech Republic: **native**

Ecological indicator values

Ellenberg-type indicator values

Light indicator value: **7 - half-light plant, mostly occurring at full light, but also in the shade up to about 30% of diffuse radiation incident in an open area**
Temperature indicator value: **3 - cool indicator, occurring mainly in subalpine areas**
Moisture indicator value: **5 - indicator of fresh soils, focus on soils of average moisture, missing on wet and on soils that frequently dry out**
Reaction indicator value: **5 - indicator of moderate acidity, occurring rarely in strongly acidic as well as in neutral to alkaline conditions**
Nutrient indicator value: **3 - occurring at nutrient-poor sites more frequently than at average sites and exceptionally at rich sites**
Salinity indicator value: **0 - not salt tolerant, glycophyte**

Habitat and sociology

Occurrence in habitats

2 Alpine and subalpine grasslands

2B Subalpine tall-forb and tall-grass vegetation: **2 - optimum**

11 Heathlands and scrub

11D Subalpine acidophilous Pinus mugo scrub: **2 - optimum**

11H Subalpine deciduous scrub: **2 - optimum**

Affinity to the forest environment

Affinity to the forest environment in Thermophyticum: **0 - taxon that does not spontaneously occur in Czech forests**

Affinity to the forest environment in Mesophyticum and Oreophyticum: **0 - taxon that does not spontaneously occur in Czech forests**

Distribution and frequency

Floristic zone: **arctic, boreal, northern temperate, southern temperate, submeridional**

Floristic region: **Europe**

Continentality degree: **4**

Distribution range extension along the continentality gradient: **4**

Elevational belt in the Czech Republic: **subalpine belt**

Occurrence frequency in the basic grid mapping cells and quadrants of the basic grid mapping cells: **6**

taxon.data.freq_in_quad: **8**

Number of habitats with taxon occurrence in the Czech Republic

Number of narrow habitats in which the taxon occurs: **3**

Number of narrow habitats in which the taxon has its optimum: **3**

Number of broad habitats in which the taxon occurs: **2**

Number of broad habitats in which the taxon has its optimum: **2**

Threats and protection

Red List 2017 (national categories): **C1b - critically threatened taxon, rare and declining**

Red List 2017 (IUCN categories): **CR - critically endangered**

Legal protection: **not protected by law**