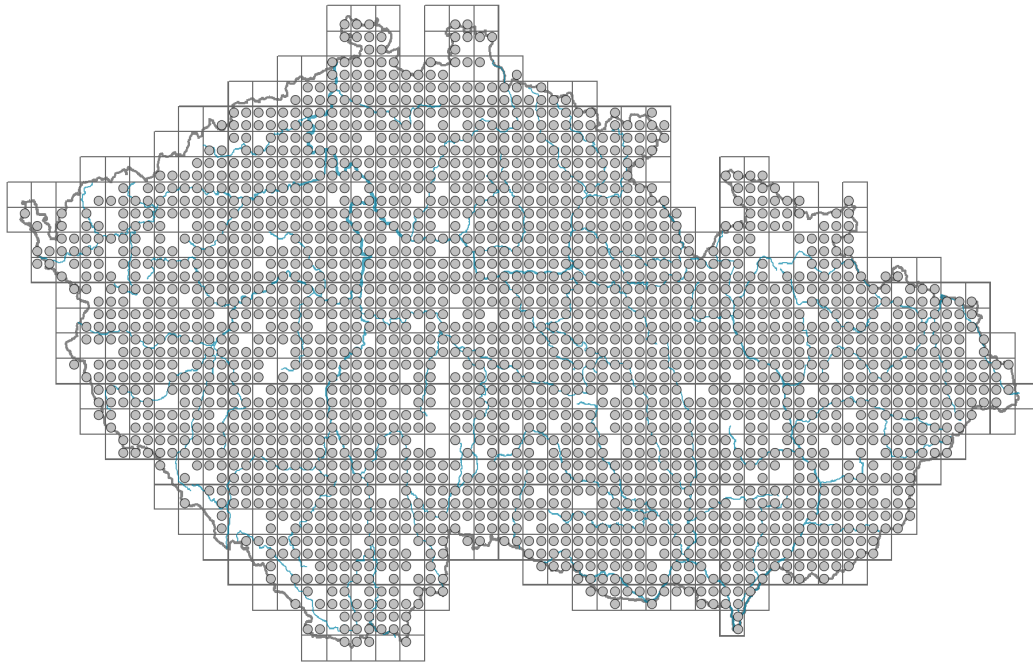


Chelidonium majus

Distribution



© Pivrel Veselý

Map info

● revised records

○ unrevised records

On the map are not visualized records without the coordinates and records marked as incorrect or doubtful.



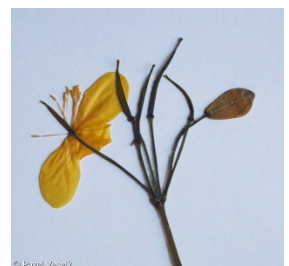
© Milan Chyzy



© Milan Chyzy



© Ivan Holubec



© Pivrel Veselý

Habitus and growth type

Height [m]: **0.3-0.9**

Growth form: **polycarpic perennial non-clonal herb**

Life form: **hemicryptophyte**

Life strategy: **CR - competitor/ruderal**

Life strategy (Pierce method based on leaf traits): **CR**

Life strategy (Pierce method, C-score): **54.7 %**

Life strategy (Pierce method, S-score): **6.6 %**

Life strategy (Pierce method, R-score): **38.8 %**

Leaf

Leaf presence and metamorphosis: **leaves present, not modified**

Leaf arrangement (phyllotaxis): **alternate**

Leaf shape: **compound - imparipinnate, compound - interruptedly pinnate**

Stipules: **absent**

Petiole: **present**

Leaf life span: **summer green**

Leaf anatomy: **hygromorphic**

Flower

Flowering period [month]: **May-September**

Flowering phase: **4 Fagus sylvatica-Galeobdolon (start of mid-spring)**
 Flower colour: **yellow**
 Flower symmetry: **actinomorphic**
 Perianth type: **calyx and corolla**
 Perianth fusion: **free**
 Calyx fusion: **aposepalous**
 Inflorescence type: **umbrella**
 Dicliny: **synoecious**
 Generative reproduction type: **mixed mating**
 Pollination syndrome: **insect-pollination, selfing**



Fruit, seed and dispersal

Fruit type: **dry fruit - capsule**
 Fruit colour: **brown**
 Reproduction type: **only by seed/spores**
 Dispersal unit (diaspore): **seed**
 Dispersal strategy: **Allium (mainly autochory)**
 Myrmecochory: **myrmecochorous**



Belowground organs and clonality

Shoot metamorphosis: **pleiocorm**
 Root metamorphosis: **primary storage root**
 Storage organ: **pleiocorm, primary storage root**
 Shoot life span (cyclicality): **dicyclic or polycyclic shoots prevailing**
 Branching type of stem-derived organs of clonal growth: **sympodial**
 Primary root: **present**
 Bud bank
 Number of buds per shoot at the soil surface (root buds excluded): **5**
 Number of buds per shoot at a depth of 0–10 cm (root buds excluded): **15**
 Number of buds per shoot at a depth greater than 10 cm (root buds excluded): **0**
 Size of the belowground bud bank (root buds excluded): **20**
 Depth of the belowground bud bank (root buds excluded) [cm]: **4**
 Number of buds per shoot at the soil surface (root buds included): **5**
 Number of buds per shoot at a depth of 0–10 cm (root buds included): **15**
 Number of buds per shoot at a depth greater than 10 cm (root buds included): **0**
 Size of the belowground bud bank (root buds included): **20**
 Depth of the belowground bud bank (root buds included) [cm]: **4**



Trophic mode

Parasitism and mycoheterotrophy: **autotrophic**
 Carnivory: **non-carnivorous**
 Symbiotic nitrogen fixation: **no nitrogen-fixing symbionts**

Karyology

Chromosome number (2n): **12**

Ploidy level (x): **2**
 2C genome size [Mbp]: **1967.35**
 1Cx monoploid genome size [Mbp]: **983.67**
 Genomic GC content: **40.2 %**

Taxon origin

Origin in the Czech Republic: **native**

Ecological indicator values

Ellenberg-type indicator values

Light indicator value: **6 - transition between values 5 and 7; rarely at less than 20% of diffuse radiation incident in an open area**

Temperature indicator value: **6 - transition between values 5 and 7**

Moisture indicator value: **5 - indicator of fresh soils, focus on soils of average moisture, missing on wet and on soils that frequently dry out**

Reaction indicator value: **7x - indicator of slightly acidic to slightly basic conditions, never occurring in very acidic conditions (generalist)**

Nutrient indicator value: **8 - pronounced nutrient indicator**

Salinity indicator value: **0 - not salt tolerant, glycophyte**

Indicator values for disturbance

Whole-community disturbance frequency indicator value: **-1.4**

Herb layer disturbance frequency indicator value: **-0.93**

Whole-community disturbance severity indicator value: **0.44**

Herb layer disturbance severity indicator value: **0.4**

Whole-community structure based disturbance indicator value: **0.3**

Herb layer structure-based disturbance indicator value: **0.29**

Habitat and sociology

Occurrence in habitats

1 Vegetation of cliffs, screes and walls

1A Calcareous cliffs: **2 - optimum**

1B Siliceous cliffs and block fields: **1 - rare occurrence**

1C Walls: **2 - optimum**

1D Mobile calcareous screes: **1 - rare occurrence**

4 Wetland and riverine herbaceous vegetation

4L Nitrophilous herbaceous fringes of lowland rivers: **2 - optimum**

8 Dry grasslands

8A Hercynian dry grasslands on rock outcrops: **1 - rare occurrence**

11 Heathlands and scrub

11L Tall mesic and xeric shrub: **2 - optimum**

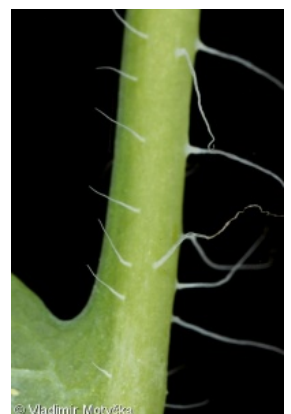
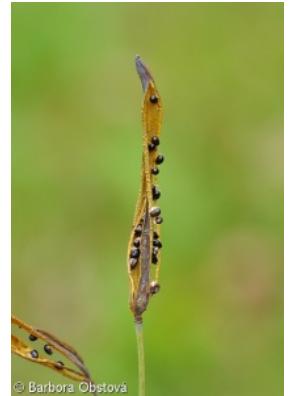
11N Low xeric scrub: **1 - rare occurrence**

11R Scrub and pioneer woodland of forests clearings: **2 - optimum**

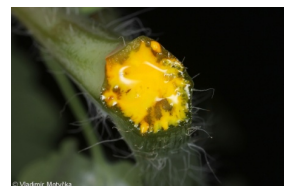
12 Forests

12B Alluvial forests: **1 - rare occurrence**

12C Oak-hornbeam forests: **1 - rare occurrence**



- 12D Ravine forests: **2 - optimum**
- 12E Herb-rich beech forests: **1 - rare occurrence**
- 12F Limestone beech forests: **1 - rare occurrence**
- 12G Acidophilous beech forests: **1 - rare occurrence**
- 12H Peri-Alpidic basiphilous thermophilous oak forests: **1 - rare occurrence**
- 12J Acidophilous thermophilous oak forests: **1 - rare occurrence**
- 12K Acidophilous oak forests: **1 - rare occurrence**
- 12T Robinia pseudacacia plantations: **2 - optimum**
- 12U Plantations of broad-leaved non-native trees: **2 - optimum**
- 12V Spruce plantations: **1 - rare occurrence**
- 12W Pine and larch plantations: **1 - rare occurrence**
- 13 Anthropogenic vegetation
- 13A Annual vegetation of ruderal habitats: **2 - optimum**
- 13D Perennial thermophilous ruderal vegetation: **2 - optimum**
- 13E Perennial nitrophilous herbaceous vegetation of mesic sites: **2 - optimum**
- 13F Herbaceous vegetation of forests clearings and Rubus scrub: **1 - rare occurrence**
- Affinity to the forest environment
- Affinity to the forest environment in Thermophyticum: **2.1 - taxon occurring both in the forest and open vegetation**
- Affinity to the forest environment in Mesophyticum and Oreophyticum: **2.1 - taxon occurring both in the forest and open vegetation**
- Diagnostic taxon
- Diagnostic taxon of classes: [KB Rhamno-Prunetea](#), [SB Cymbalario muralis-Parietarietea judaicae](#)
- Diagnostic taxon of alliances: [KBD Aegopodio podagrariae-Sambucion nigrae](#), [KBE Chelidonio majoris-Robinion pseudoacaciae](#), [SBA Cymbalario muralis-Asplenion](#), [XDD Geo urbani-Alliarion petiolatae](#)
- Diagnostic taxon of associations: [KBD01 Sambucetum nigrae](#), [KBE01 Chelidonio majoris-Robinetum pseudoacaciae](#), [SBA01 Cymbalarietum muralis](#), [XDD01 Alliarion petiolatae-Chaerophylletum temuli](#), [XDD03 Anthriscetum trichospermae](#)
- Constant taxon
- Constant taxon of classes: [SB Cymbalario muralis-Parietarietea judaicae](#)
- Constant taxon of alliances: [KBE Chelidonio majoris-Robinion pseudoacaciae](#), [KBF Balloto nigrae-Robinion pseudoacaciae](#), [SBA Cymbalario muralis-Asplenion](#), [XDD Geo urbani-Alliarion petiolatae](#)
- Constant taxon of associations: [KBD01 Sambucetum nigrae](#), [KBE01 Chelidonio majoris-Robinetum pseudoacaciae](#), [KBE02 Poo nemoralis-Robinetum pseudoacaciae](#), [KBF01 Arrhenathero elatioris-Robinetum pseudoacaciae](#), [SBA01 Cymbalarietum muralis](#), [XDD01 Alliarion petiolatae-Chaerophylletum temuli](#), [XDD03 Anthriscetum trichospermae](#)
- Dominant taxon
- Dominant taxon of associations: [KBD01 Sambucetum nigrae](#), [KBE01 Chelidonio majoris-Robinetum pseudoacaciae](#), [XDD01 Alliarion petiolatae-Chaerophylletum temuli](#)
- Ecological specialization indices
- Ecological specialization index for all vegetation types: **3.8**
- Ecological specialization index for non-forest vegetation: **4**
- Ecological specialization index for forest vegetation: **4.8**



Colonization ability

Index of colonization success (ICS): **6**
 Index of colonization potential (ICP): **6**
 Optimum successional age [years]: **29**

Distribution and frequency

Floristic zone: **boreal, northern temperate, southern temperate, submeridional, meridional**

Floristic region: **Europe, Asia**

Distribution range extension along the continentality gradient: **7**

Elevational belt in the Czech Republic: **lowlands, colline belt, submontane belt**

Expansive taxon in the region: **Bohemian Thermophyticum, Bohemian Moravian Mesophyticum, Pannonian Thermophyticum, Carpathian Mesophyticum**

Occurrence frequency in the basic grid mapping cells and quadrants of the basic grid mapping cells: **643**

taxon.data.freq_in_quad: **2203**

Commonness in vegetation plots from the Czech Republic

Occurrence frequency in vegetation plots: **2.5 %**

Occurrence frequency in vegetation plots with a cover above 5%: **18.3 %**

Occurrence frequency in vegetation plots with a cover above 25%: **6.6 %**

Occurrence frequency in vegetation plots with a cover above 50%: **2.1 %**

Mean percentage cover in vegetation plots: **6.2 %**

Maximum percentage cover in vegetation plots: **88 %**

Number of habitats with taxon occurrence in the Czech Republic

Number of narrow habitats in which the taxon occurs: **26**

Number of narrow habitats in which the taxon has its optimum: **11**

Number of broad habitats in which the taxon occurs: **6**

Number of broad habitats in which the taxon has its optimum: **5**

Threats and protection

Red List 2017 (national categories): **taxon is not on the Red List**

Red List 2017 (IUCN categories): **LC(NA) - least concern (taxon is not on the Red List)**

Legal protection: **not protected by law**

