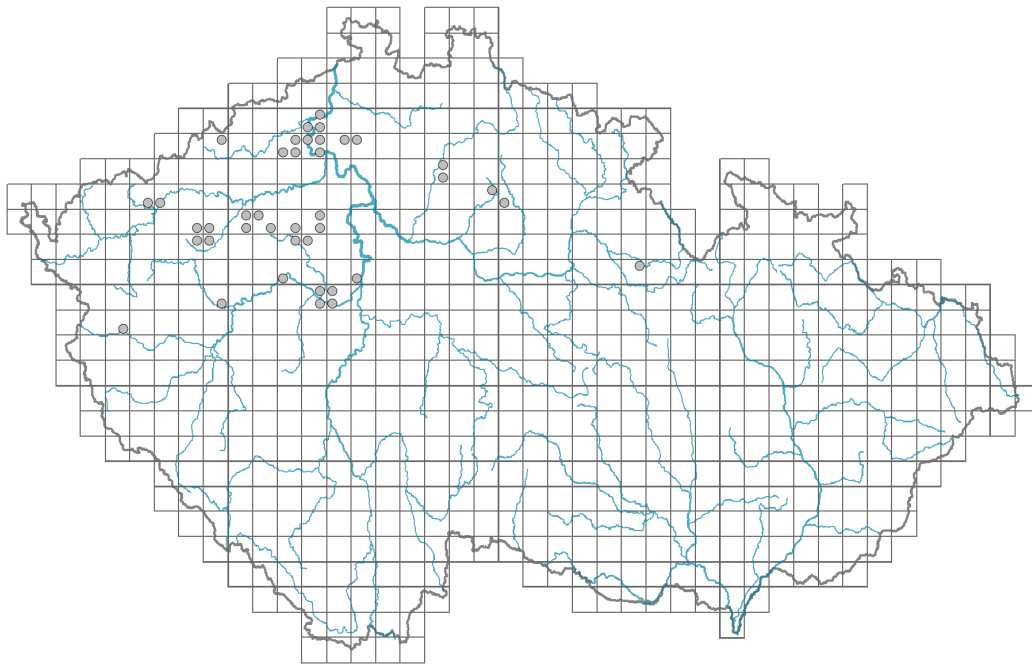


# *Lathyrus heterophyllus*

## Distribution



### Map info

● revised records

○ unrevised records

On the map are not visualized records without the coordinates and records marked as incorrect or doubtful.

## Habitus and growth type

Height [m]: **0.6-1.5**

Growth form: **polycarpic perennial non-clonal herb**

Life form: **hemicryptophyte**

Life strategy: **C - competitor**

Life strategy (Pierce method based on leaf traits): **C/CSR**

Life strategy (Pierce method, C-score): **54 %**

Life strategy (Pierce method, S-score): **19.1 %**

Life strategy (Pierce method, R-score): **26.9 %**

## Leaf

Leaf presence and metamorphosis: **leaves present, not modified**

Leaf arrangement (phyllotaxis): **alternate**

Leaf shape: **compound - paripinnate**

Stipules: **present**

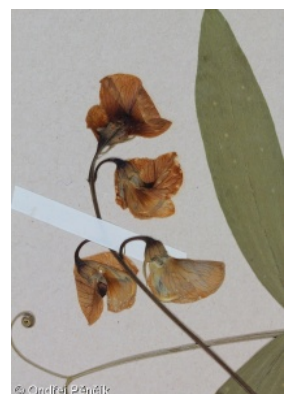
Petiole: **present**

Leaf life span: **summer green**

Leaf anatomy: **mesomorphic**

## Flower

Flowering period [month]: **July-August**



Flowering phase: **6 Cornus sanguinea-Melica uniflora (start of early summer)**

Flower colour: **pink**

Flower symmetry: **zygomorphic**

Perianth type: **calyx and corolla**

Perianth fusion: **free**

Calyx fusion: **synsepalous**

Inflorescence type: **racemus**

Dicliny: **synoecious**

Generative reproduction type: **mixed mating**

Pollination syndrome: **insect-pollination**



## Fruit, seed and dispersal

Fruit type: **dry fruit - legume**

Reproduction type: **only by seed/spores**

Dispersal unit (diaspore): **seed**

Dispersal strategy: **Allium (mainly autochory)**

Myrmecochory: **non-myrmecochorous (b)**

## Belowground organs and clonality

Shoot metamorphosis: **pleiocorm**

Storage organ: **pleiocorm**

Shoot life span (cyclicality): **monocyclic shoots prevailing**

Branching type of stem-derived organs of clonal growth: **sympodial**

Primary root: **present**

### Bud bank

Number of buds per shoot at the soil surface (root buds excluded): **5**

Number of buds per shoot at a depth of 0–10 cm (root buds excluded): **5**

Number of buds per shoot at a depth greater than 10 cm (root buds excluded): **0**

Size of the belowground bud bank (root buds excluded): **10**

Depth of the belowground bud bank (root buds excluded) [cm]: **3**

Number of buds per shoot at the soil surface (root buds included): **5**

Number of buds per shoot at a depth of 0–10 cm (root buds included): **5**

Number of buds per shoot at a depth greater than 10 cm (root buds included): **0**

Size of the belowground bud bank (root buds included): **10**

Depth of the belowground bud bank (root buds included) [cm]: **3**

## Trophic mode

Parasitism and mycoheterotrophy: **autotrophic**

Carnivory: **non-carnivorous**

Symbiotic nitrogen fixation: **symbiosis with rhizobia**

## Taxon origin

Origin in the Czech Republic: **native**

## Ecological indicator values

### Ellenberg-type indicator values

Light indicator value: **7 - half-light plant, mostly occurring at full light, but also in the shade up to about 30% of diffuse radiation incident in an open area**

Temperature indicator value: **7 - heat indicator, occurring in relatively warm lowlands**

Moisture indicator value: **4 - transition between values 3 and 5**

Reaction indicator value: **8 - transition between values 7 and 9, occurring mostly in calcium-rich conditions**

Nutrient indicator value: **4 - transition between values 3 and 5**

Salinity indicator value: **0 - not salt tolerant, glycophyte**

## Habitat and sociology

### Occurrence in habitats

1 Vegetation of cliffs, screes and walls

1B Siliceous cliffs and block fields: **1 - rare occurrence**

1D Mobile calcareous screes: **1 - rare occurrence**

8 Dry grasslands

8A Hercynian dry grasslands on rock outcrops: **1 - rare occurrence**

8B Submediterranean dry grasslands on rock outcrops: **1 - rare occurrence**

8F Thermophilous forest fringe vegetation: **2 - optimum**

11 Heathlands and scrub

11L Tall mesic and xeric shrub: **2 - optimum**

12 Forests

12C Oak-hornbeam forests: **1 - rare occurrence**

12H Peri-Alpidic basiphilous thermophilous oak forests: **1 - rare occurrence**

12J Acidophilous thermophilous oak forests: **1 - rare occurrence**

13 Anthropogenic vegetation

13F Herbaceous vegetation of forests clearings and Rubus scrub: **1 - rare occurrence**

### Affinity to the forest environment

Affinity to the forest environment in Thermophyticum: **2.2 - taxon occurring partly in the forest, but mainly in open vegetation**

Affinity to the forest environment in Mesophyticum and Oreophyticum: **2.2 - taxon occurring partly in the forest, but mainly in open vegetation**

### Colonization ability

Index of colonization success (ICS): **1**

## Distribution and frequency

Floristic zone: **northern temperate, southern temperate, submeridional**

Floristic region: **Europe**

Continental degree: **4**

Distribution range extension along the continentality gradient: **2**

Elevational belt in the Czech Republic: **colline belt**

Occurrence frequency in the basic grid mapping cells and quadrants of the basic grid mapping cells: **29**

taxon.data.freq\_in\_quad: 41

Number of habitats with taxon occurrence in the Czech Republic

Number of narrow habitats in which the taxon occurs: **10**

Number of narrow habitats in which the taxon has its optimum: **2**

Number of broad habitats in which the taxon occurs: **5**

Number of broad habitats in which the taxon has its optimum: **2**

### **Threats and protection**

Red List 2017 (national categories): **C2r - endangered taxon, rare**

Red List 2017 (IUCN categories): **EN - endangered**

Legal protection: **endangered taxon**