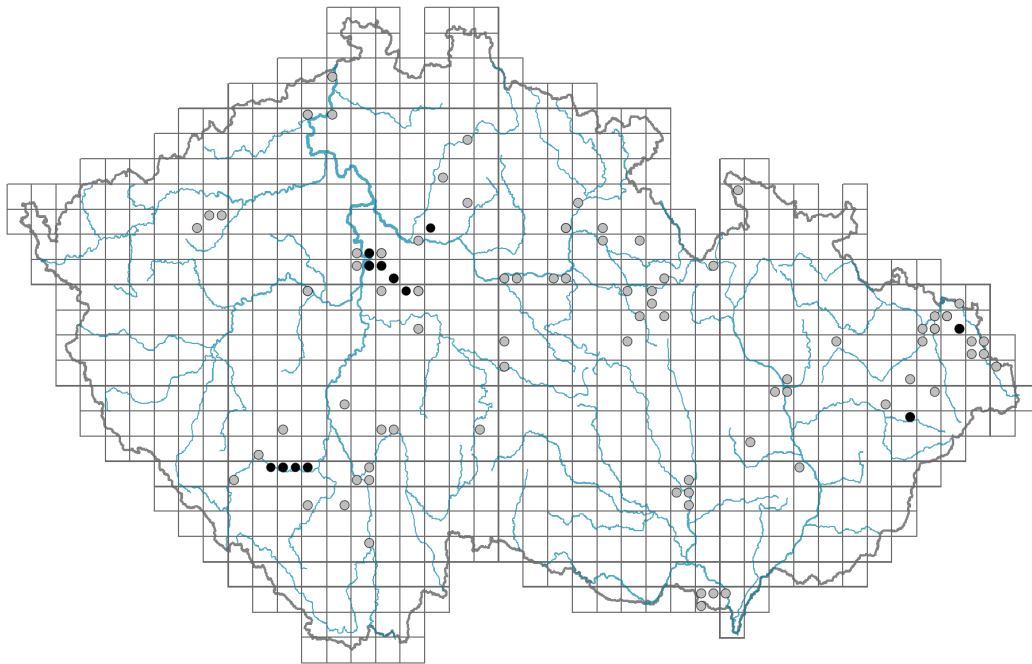


Panicum capillare

Distribution



Map info

● revised records

○ unrevised records

On the map are not visualized records without the coordinates and records marked as incorrect or doubtful.

Habitus and growth type

Height [m]: **0.3-0.5**

Growth form: **annual herb**

Life form: **therophyte**

Life strategy: **CR - competitor/ruderal**

Life strategy (Pierce method based on leaf traits): **S/CSR**

Life strategy (Pierce method, C-score): **31.1 %**

Life strategy (Pierce method, S-score): **46.3 %**

Life strategy (Pierce method, R-score): **22.6 %**

Leaf

Leaf presence and metamorphosis: **leaves present, not modified**

Leaf arrangement (phyllotaxis): **alternate**

Leaf shape: **simple - entire**

Stipules: **absent**

Petiole: **absent**

Leaf life span: **summer green**

Leaf anatomy: **mesomorphic**

Flower

Flowering period [month]: **July-August**



Flower colour: **green**
Perianth type: **reduced**
Perianth fusion: **reduced**
Inflorescence type: **panicula e spiculis composita**
Dicliny: **synoecious**
Generative reproduction type: **facultative allogamy, autogamy**
Pollination syndrome: **wind-pollination**

Fruit, seed and dispersal

Fruit type: **dry fruit - caryopsis**
Fruit colour: **brown**
Reproduction type: **only by seed/spores**
Dispersal unit (diaspore): **fruit, infrutescence or its part, tumbleweed**
Dispersal strategy: **Allium (mainly autochory)**
Myrmecochory: **non-myrmecochorous (b)**

Trophic mode

Parasitism and mycoheterotrophy: **autotrophic**
Carnivory: **non-carnivorous**
Symbiotic nitrogen fixation: **no nitrogen-fixing symbionts**

Taxon origin

Origin in the Czech Republic: **neophyte**
Invasion status: **naturalized**
Geographic origin: **North America**

Ecological indicator values

Ellenberg-type indicator values

Light indicator value: **8 - light plant, only exceptionally occurring at less than 40% of diffuse radiation incident in an open area**

Temperature indicator value: **7 - heat indicator, occurring in relatively warm lowlands**

Moisture indicator value: **4 - transition between values 3 and 5**

Reaction indicator value: **6 - transition between values 5 and 7**

Nutrient indicator value: **6 - transition between values 5 and 7**

Salinity indicator value: **0 - not salt tolerant, glycophyte**

Habitat and sociology

Occurrence in habitats

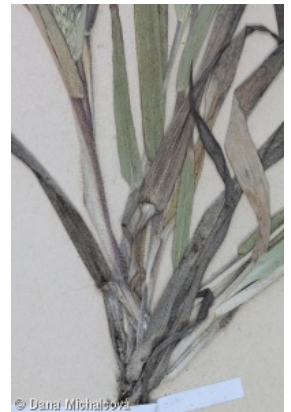
13 Anthropogenic vegetation

13A Annual vegetation of ruderal habitats: **2 - optimum**

13D Perennial thermophilous ruderal vegetation: **1 - rare occurrence**

Affinity to the forest environment

Affinity to the forest environment in Thermophyticum: **0 - taxon that does not**



spontaneously occur in Czech forests

Affinity to the forest environment in Mesophyticum and Oreophyticum: **0 - taxon that does not spontaneously occur in Czech forests**

Diagnostic taxon

Diagnostic taxon of alliances: [XBK Eragrostion cilianensi-minoris](#)

Diagnostic taxon of associations: [XBK03 Eragrostio poaeoidis-Panicetum capillaris](#)

Constant taxon

Constant taxon of associations: [XBK03 Eragrostio poaeoidis-Panicetum capillaris](#)

Dominant taxon

Dominant taxon of associations: [XBK03 Eragrostio poaeoidis-Panicetum capillaris](#)

Distribution and frequency

Floristic zone: **northern temperate, southern temperate, submeridional, meridional**

Floristic region: **Americas**

Distribution range extension along the continentality gradient: **8**

Occurrence frequency in the basic grid mapping cells and quadrants of the basic grid mapping cells: **67**

taxon.data.freq_in_quad: **90**

Commonness in vegetation plots from the Czech Republic

Occurrence frequency in vegetation plots: **0 %**

Occurrence frequency in vegetation plots with a cover above 5%: **80 %**

Occurrence frequency in vegetation plots with a cover above 25%: **80 %**

Occurrence frequency in vegetation plots with a cover above 50%: **60 %**

Mean percentage cover in vegetation plots: **45.7 %**

Maximum percentage cover in vegetation plots: **63 %**

Number of habitats with taxon occurrence in the Czech Republic

Number of narrow habitats in which the taxon occurs: **2**

Number of narrow habitats in which the taxon has its optimum: **1**

Number of broad habitats in which the taxon occurs: **1**

Number of broad habitats in which the taxon has its optimum: **1**

Threats and protection

Red List 2017 (national categories): **taxon is not on the Red List**

Red List 2017 (IUCN categories): **LC(NA) - least concern (taxon is not on the Red List)**

Legal protection: **not protected by law**