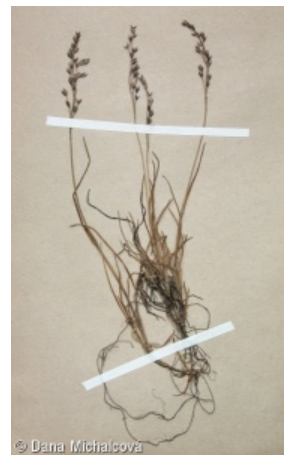
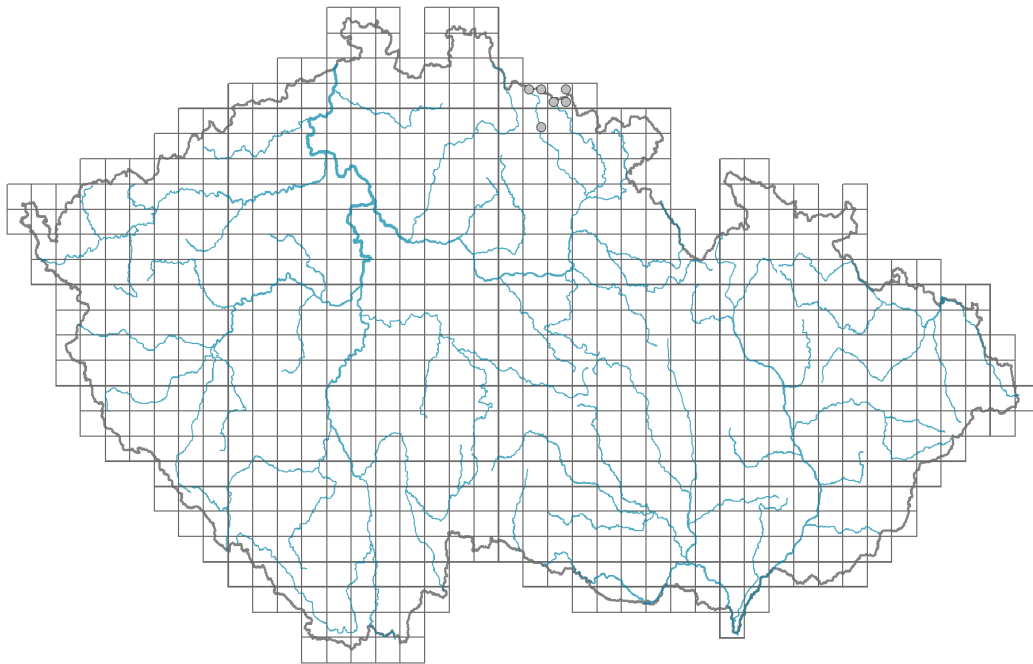


Poa laxa

Distribution



© Dana Michalčová

Map info

● revised records

○ unrevised records

On the map are not visualized records without the coordinates and records marked as incorrect or doubtful.



© Ester Laksova

Habitus and growth type

Height [m]: **0.1-0.3**

Growth form: **clonal herb**

Life form: **hemicryptophyte**

Life strategy (Pierce method based on leaf traits): **S/CSR**

Life strategy (Pierce method, C-score): **11.7 %**

Life strategy (Pierce method, S-score): **57.7 %**

Life strategy (Pierce method, R-score): **30.6 %**

Leaf

Leaf presence and metamorphosis: **leaves present, not modified**

Leaf arrangement (phyllotaxis): **alternate**

Leaf shape: **simple - entire**

Stipules: **absent**

Petiole: **absent**

Flower

Flowering period [month]: **July-August**

Flower colour: **green**

Perianth type: **reduced**

Perianth fusion: **reduced**



© Dana Michalčová

Inflorescence type: **panicula e spiculis composita**

Fruit, seed and dispersal

Fruit type: **dry fruit - caryopsis**

Fruit colour: **brown**

Dispersal unit (diaspore): **fruit, infrutescence or its part**

Dispersal strategy: **Allium (mainly autochory)**

Myrmecochory: **non-myrmecochorous (a)**

Belowground organs and clonality

Type of clonal growth organ: **epigeogenous rhizome**

Freely dispersible organs of clonal growth: **absent**

Shoot life span (cyclicality): **dicyclic or polycyclic shoots prevailing**

Branching type of stem-derived organs of clonal growth: **sympodial**

Primary root: **absent**

Persistence of the clonal growth organ [year]: **4**

Number of clonal offspring: **6**

Lateral spreading distance by clonal growth [m]: **0.01**

Clonal index: **4**

Bud bank

Number of buds per shoot at the soil surface (root buds excluded): **5**

Number of buds per shoot at a depth of 0–10 cm (root buds excluded): **10**

Number of buds per shoot at a depth greater than 10 cm (root buds excluded): **0**

Size of the belowground bud bank (root buds excluded): **15**

Depth of the belowground bud bank (root buds excluded) [cm]: **4**

Number of buds per shoot at the soil surface (root buds included): **5**

Number of buds per shoot at a depth of 0–10 cm (root buds included): **10**

Number of buds per shoot at a depth greater than 10 cm (root buds included): **0**

Size of the belowground bud bank (root buds included): **15**

Depth of the belowground bud bank (root buds included) [cm]: **4**

Trophic mode

Parasitism and mycoheterotrophy: **autotrophic**

Carnivory: **non-carnivorous**

Symbiotic nitrogen fixation: **no nitrogen-fixing symbionts**

Karyology

Chromosome number (2n): **28**

Ploidy level (x): **4**

2C genome size [Mbp]: **3990.91**

1Cx monoploid genome size [Mbp]: **997.73**

Genomic GC content: **46.9 %**



Taxon origin

Origin in the Czech Republic: **native**

Ecological indicator values

Ellenberg-type indicator values

Light indicator value: **7 - half-light plant, mostly occurring at full light, but also in the shade up to about 30% of diffuse radiation incident in an open area**

Temperature indicator value: **2 - transition between values 1 and 3**

Moisture indicator value: **6 - transition between values 5 and 7**

Reaction indicator value: **4 - transition between values 3 and 5**

Nutrient indicator value: **2 - transition between values 1 and 3**

Salinity indicator value: **0 - not salt tolerant, glycophyte**



Habitat and sociology

Occurrence in habitats

1 Vegetation of cliffs, screes and walls

1B Siliceous cliffs and block fields: **2 - optimum**

Affinity to the forest environment

Affinity to the forest environment in Thermophyticum: **0 - taxon that does not spontaneously occur in Czech forests**

Affinity to the forest environment in Mesophyticum and Oreophyticum: **0 - taxon that does not spontaneously occur in Czech forests**

Distribution and frequency

Continentality degree: **5**

Distribution range extension along the continentality gradient: **3**

Elevational belt in the Czech Republic: **montane belt, subalpine belt**

Occurrence frequency in the basic grid mapping cells and quadrants of the basic grid mapping cells: **3**

taxon.data.freq_in_quad: **6**

Number of habitats with taxon occurrence in the Czech Republic

Number of narrow habitats in which the taxon occurs: **1**

Number of narrow habitats in which the taxon has its optimum: **1**

Number of broad habitats in which the taxon occurs: **1**

Number of broad habitats in which the taxon has its optimum: **1**

Threats and protection

Red List 2017 (national categories): **C2r - endangered taxon, rare**

Red List 2017 (IUCN categories): **EN - endangered**

Legal protection: **endangered taxon**