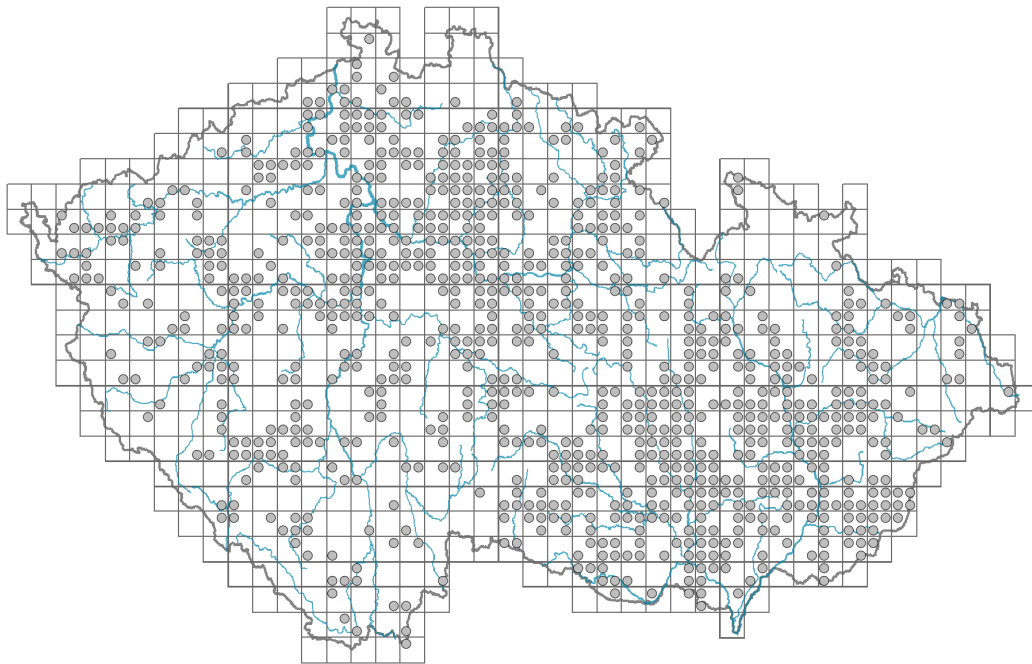


# *Prunus insititia*

## Distribution



### Map info

● revised records

○ unrevised records

On the map are not visualized records without the coordinates and records marked as incorrect or doubtful.



## Habitus and growth type

Height [m]: **3-10**

Growth form: **shrub (tree)**

Life form: **nanophanerophyte (macrophanerophyte)**

## Leaf

Leaf presence and metamorphosis: **leaves present, not modified**

Leaf arrangement (phyllotaxis): **alternate**

Leaf shape: **simple - entire**

Stipules: **present**

Petiole: **present**

Leaf deciduousness in woody plants: **winter deciduous**

Functional leaf type in woody plants: **broad deciduous or semi-deciduous**

## Flower

Flowering period [month]: **April-May**

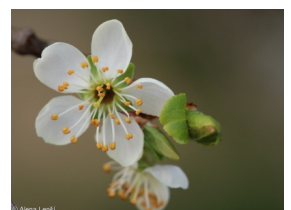
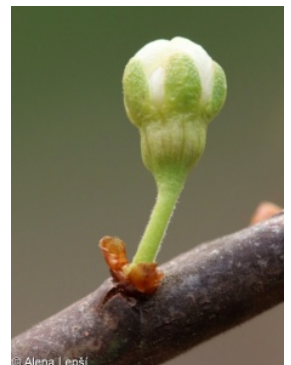
Flower colour: **white, green-white**

Flower symmetry: **actinomorphic**

Perianth type: **calyx and corolla**

Perianth fusion: **free**

Calyx fusion: **aposepalous**



Inflorescence type: **flores solitarii**

Generative reproduction type: **facultative allogamy**

### Fruit, seed and dispersal

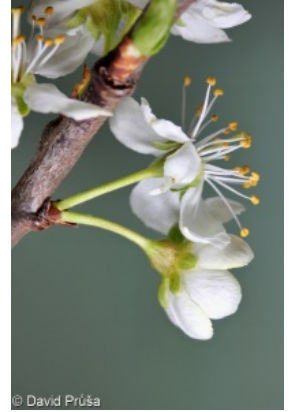
Fruit type: **fleshy fruit - drupe**

Fruit colour: **yellow, violet, red, blue**

Dispersal unit (diaspore): **seed, fruit, infructescence or its part**

Dispersal strategy: **Cornus (mainly autochory and endozoochory)**

Myrmecochory: **non-myrmecochorous (b)**



© David Průša

### Belowground organs and clonality

Position of root buds: **lateral roots**

Role of root buds in life-history of a plant: **regenerative**

#### Bud bank

Number of buds per shoot at the soil surface (root buds excluded): **0**

Number of buds per shoot at a depth of 0–10 cm (root buds excluded): **0**

Number of buds per shoot at a depth greater than 10 cm (root buds excluded): **0**

Size of the belowground bud bank (root buds excluded): **0**

Number of buds per shoot at the soil surface (root buds included): **0**

Number of buds per shoot at a depth of 0–10 cm (root buds included): **15**

Number of buds per shoot at a depth greater than 10 cm (root buds included): **15**

Size of the belowground bud bank (root buds included): **30**

Depth of the belowground bud bank (root buds included) [cm]: **10**



© Dana Michalčová



© Dana Michalčová

### Trophic mode

Parasitism and mycoheterotrophy: **autotrophic**

Carnivory: **non-carnivorous**

Symbiotic nitrogen fixation: **no nitrogen-fixing symbionts**

### Karyology

Chromosome number (2n): **48**

Ploidy level (x): **6**

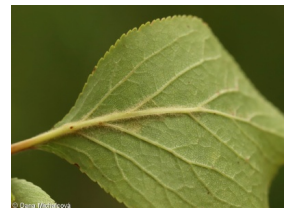
2C genome size [Mbp]: **1707.45**

1Cx monoploid genome size [Mbp]: **284.57**

Genomic GC content: **40.3 %**



© Dana Michalčová



© Dana Michalčová

### Taxon origin

Origin in the Czech Republic: **archaeophyte**

Invasion status: **naturalized**

Geographic origin: **Mediterranean**

Period of introduction: **Early Middle Ages (550-1200)**

Introduction pathway: **intentional - crops**

## Ecological indicator values

### Ellenberg-type indicator values

Light indicator value: **6 - transition between values 5 and 7; rarely at less than 20% of diffuse radiation incident in an open area**

Temperature indicator value: **6 - transition between values 5 and 7**

Moisture indicator value: **5 - indicator of fresh soils, focus on soils of average moisture, missing on wet and on soils that frequently dry out**

Reaction indicator value: **7 - indicator of slightly acidic to slightly basic conditions, never occurring in very acidic conditions**

Nutrient indicator value: **5 - occurring at moderately nutrient-rich sites, and less frequently at poor and rich sites**

Salinity indicator value: **0 - not salt tolerant, glycophyte**

## Habitat and sociology

### Occurrence in habitats

#### 11 Heathlands and scrub

11L Tall mesic and xeric shrub: **2 - optimum**

11R Scrub and pioneer woodland of forests clearings: **2 - optimum**

#### 12 Forests

12T Robinia pseudacacia plantations: **1 - rare occurrence**

12U Plantations of broad-leaved non-native trees: **1 - rare occurrence**

#### 13 Anthropogenic vegetation

13E Perennial nitrophilous herbaceous vegetation of mesic sites: **1 - rare occurrence**

### Affinity to the forest environment

Affinity to the forest environment in Thermophyticum: **2.2 - taxon occurring partly in the forest, but mainly in open vegetation**

Affinity to the forest environment in Mesophyticum and Oreophyticum: **2.2 - taxon occurring partly in the forest, but mainly in open vegetation**

### Colonization ability

Index of colonization success (ICS): **3**

Index of colonization potential (ICP): **9**

Optimum successional age [years]: **36**

## Distribution and frequency

Elevational belt in the Czech Republic: **lowlands, colline belt, submontane belt**

Occurrence frequency in the basic grid mapping cells and quadrants of the basic grid mapping cells: 430

taxon.data.freq\_in\_quad: 873

### Commonness in vegetation plots from the Czech Republic

Occurrence frequency in vegetation plots: **0 %**

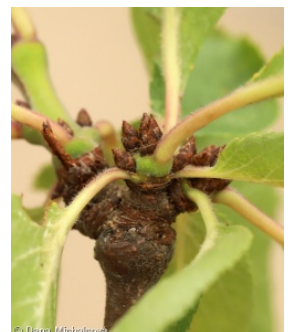
Occurrence frequency in vegetation plots with a cover above 5%: **0 %**

Occurrence frequency in vegetation plots with a cover above 25%: **0 %**

Occurrence frequency in vegetation plots with a cover above 50%: **0 %**

Mean percentage cover in vegetation plots: **3 %**

Maximum percentage cover in vegetation plots: **3 %**



Number of habitats with taxon occurrence in the Czech Republic

Number of narrow habitats in which the taxon occurs: **5**

Number of narrow habitats in which the taxon has its optimum: **2**

Number of broad habitats in which the taxon occurs: **3**

Number of broad habitats in which the taxon has its optimum: **1**

### **Threats and protection**

Red List 2017 (national categories): **taxon is not on the Red List**

Red List 2017 (IUCN categories): **LC(NA) - least concern (taxon is not on the Red List)**

Legal protection: **not protected by law**