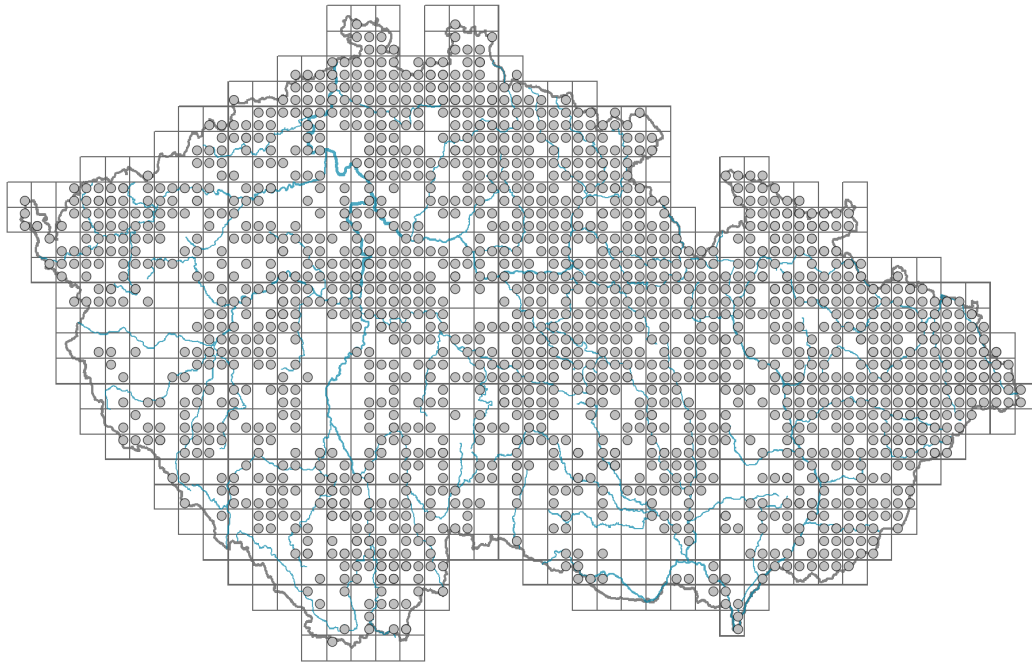


Reynoutria japonica

Distribution



Map info

● revised records

○ unrevised records

On the map are not visualized records without the coordinates and records marked as incorrect or doubtful.



Habitus and growth type

Height [m]: **1-3**

Growth form: **clonal herb**

Life form: **geophyte**

Life strategy: **C - competitor**

Life strategy (Pierce method based on leaf traits): **C/CSR**

Life strategy (Pierce method, C-score): **60.9 %**

Life strategy (Pierce method, S-score): **23.1 %**

Life strategy (Pierce method, R-score): **16 %**

Leaf

Leaf presence and metamorphosis: **leaves present, not modified**

Leaf arrangement (phyllotaxis): **alternate**

Leaf shape: **simple - entire**

Stipules: **present**

Petiole: **present**

Leaf life span: **summer green**

Leaf anatomy: **mesomorphic, helomorphic**

Flower

Flowering period [month]: **July-September**



Flowering phase: **9 Hedera helix-Solidago (early autumn)**
 Flower colour: **white, pink, red**
 Flower symmetry: **actinomorphic**
 Perianth type: **homochlamydeous**
 Perianth fusion: **fused**
 Shape of the sympetalous corolla or syntepalous perianth: **funnel-shaped**
 Inflorescence type: **panicula e pseudospicis composita**
 Dicliny: **gynodioecious**
 Generative reproduction type: **allogamy**
 Pollination syndrome: **insect-pollination**

Fruit, seed and dispersal

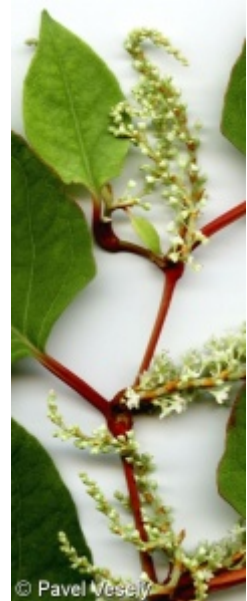
Fruit type: **dry fruit - achene/cypsela/samara**
 Fruit colour: **brown, black**
 Reproduction type: **mostly vegetatively, rarely by seed/spores**
 Dispersal unit (diaspore): **fruit, infrutescence or its part, shoot fragment**
 Dispersal strategy: **Sparganium (mainly autochory and hydrochory)**
 Myrmecochory: **probably non-myrmecochorous**

Belowground organs and clonality

Shoot metamorphosis: **rhizome**
 Storage organ: **rhizome**
 Type of clonal growth organ: **hypogeogenous rhizome**
 Freely dispersible organs of clonal growth: **absent**
 Shoot life span (cyclicality): **monocyclic shoots prevailing**
 Branching type of stem-derived organs of clonal growth: **sympodial**
 Primary root: **absent**
 Persistence of the clonal growth organ [year]: **4**
 Number of clonal offspring: **3.1**
 Lateral spreading distance by clonal growth [m]: **0.25**
 Clonal index: **4**
Bud bank
 Number of buds per shoot at the soil surface (root buds excluded): **5**
 Number of buds per shoot at a depth of 0–10 cm (root buds excluded): **15**
 Number of buds per shoot at a depth greater than 10 cm (root buds excluded): **15**
 Size of the belowground bud bank (root buds excluded): **35**
 Depth of the belowground bud bank (root buds excluded) [cm]: **9**
 Number of buds per shoot at the soil surface (root buds included): **5**
 Number of buds per shoot at a depth of 0–10 cm (root buds included): **15**
 Number of buds per shoot at a depth greater than 10 cm (root buds included): **15**
 Size of the belowground bud bank (root buds included): **35**
 Depth of the belowground bud bank (root buds included) [cm]: **9**

Trophic mode

Parasitism and mycoheterotrophy: **autotrophic**
 Carnivory: **non-carnivorous**



Symbiotic nitrogen fixation: **no nitrogen-fixing symbionts**

Karyology

Chromosome number (2n): **88 (44)**

Ploidy level (x): **8 (4)**

2C genome size [Mbp]: **8078.58**

1Cx monoploid genome size [Mbp]: **1009.82**

Genomic GC content: **40 %**

Taxon origin

Origin in the Czech Republic: **neophyte**

Invasion status: **invasive**

Geographic origin: **Asia**

Ecological indicator values

Ellenberg-type indicator values

Light indicator value: **7 - half-light plant, mostly occurring at full light, but also in the shade up to about 30% of diffuse radiation incident in an open area**

Temperature indicator value: **5 - moderate heat indicator, occurring from lowland to montane belt, mainly in submontane-temperate areas**

Moisture indicator value: **7 - humidity indicator, focus on well moistened, but not wet soils**

Reaction indicator value: **6 - transition between values 5 and 7**

Nutrient indicator value: **8 - pronounced nutrient indicator**

Salinity indicator value: **0 - not salt tolerant, glycophyte**

Indicator values for disturbance

Whole-community disturbance frequency indicator value: **-0.94**

Herb layer disturbance frequency indicator value: **-0.48**

Whole-community disturbance severity indicator value: **0.47**

Herb layer disturbance severity indicator value: **0.48**

Whole-community structure based disturbance indicator value: **0.39**

Herb layer structure-based disturbance indicator value: **0.38**

Habitat and sociology

Occurrence in habitats

4 Wetland and riverine herbaceous vegetation

4D Riverine reed vegetation: **1 - rare occurrence**

4E Reed vegetation of brooks: **1 - rare occurrence**

4I Vegetation of nitrophilous annual hygrophilous herbs: **1 - rare occurrence**

4J River gravel banks: **2 - optimum**

4K Petasites fringes of montane brooks: **1 - rare occurrence**

4L Nitrophilous herbaceous fringes of lowland rivers: **2 - optimum**

5 Vegetation of springs and mires

5B Lowland to montane soft-water springs: **1 - rare occurrence**



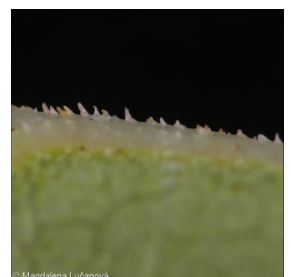
© Pavel Veselý



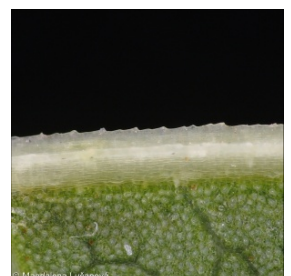
© Pavel Veselý



© Zdeněk Gláser



© Magdalena Lucanová



© Magdalena Lucanová

11 Heathlands and scrub

11J Willow galleries of loamy and sandy river banks: **2 - optimum**

11R Scrub and pioneer woodland of forests clearings: **1 - rare occurrence**

12 Forests

12B Alluvial forests: **2 - optimum**

13 Anthropogenic vegetation

13D Perennial thermophilous ruderal vegetation: **1 - rare occurrence**

13E Perennial nitrophilous herbaceous vegetation of mesic sites: **3 - dominant**

Affinity to the forest environment

Affinity to the forest environment in Thermophyticum: **2.2 - taxon occurring partly in the forest, but mainly in open vegetation**

Affinity to the forest environment in Mesophyticum and Oreophyticum: **2.2 - taxon occurring partly in the forest, but mainly in open vegetation**

Diagnostic taxon

Diagnostic taxon of alliances: [KAB Salicion elaeagno-daphnoidis](#)

Diagnostic taxon of associations: [XDE10 Reynoutrietum japonicae](#)

Constant taxon

Constant taxon of associations: [KAB03 Salici purpureae-Myricarietum germanicae](#), [XDE10 Reynoutrietum japonicae](#)

Dominant taxon

Dominant taxon of associations: [XDE10 Reynoutrietum japonicae](#)

Ecological specialization indices

Ecological specialization index for all vegetation types: **4**

Ecological specialization index for non-forest vegetation: **4**

Ecological specialization index for forest vegetation: **5.3**

Colonization ability

Index of colonization success (ICS): **4**

Index of colonization potential (ICP): **8**

Optimum successional age [years]: **21.5**

Distribution and frequency

Floristic zone: **northern temperate, southern temperate, submeridional**

Floristic region: **Eastern Asia, circumpolar**

Continental degree: **4**

Distribution range extension along the continentality gradient: **4**

Elevational belt in the Czech Republic: **lowlands, colline belt, submontane belt**

Occurrence frequency in the basic grid mapping cells and quadrants of the basic grid mapping cells: **580**

taxon.data.freq_in_quad: **1560**

Commonness in vegetation plots from the Czech Republic

Occurrence frequency in vegetation plots: **0.4 %**

Occurrence frequency in vegetation plots with a cover above 5%: **57 %**

Occurrence frequency in vegetation plots with a cover above 25%: **48.8 %**

Occurrence frequency in vegetation plots with a cover above 50%: **47.1 %**

Mean percentage cover in vegetation plots: **42.6 %**

Maximum percentage cover in vegetation plots: **99 %**

Number of habitats with taxon occurrence in the Czech Republic

Number of narrow habitats in which the taxon occurs: **12**

Number of narrow habitats in which the taxon has its optimum: **5**

Number of broad habitats in which the taxon occurs: **5**

Number of broad habitats in which the taxon has its optimum: **4**

Threats and protection

Red List 2017 (national categories): **taxon is not on the Red List**

Red List 2017 (IUCN categories): **LC(NA) - least concern (taxon is not on the Red List)**

Legal protection: **not protected by law**