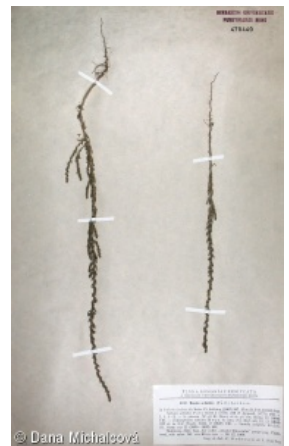
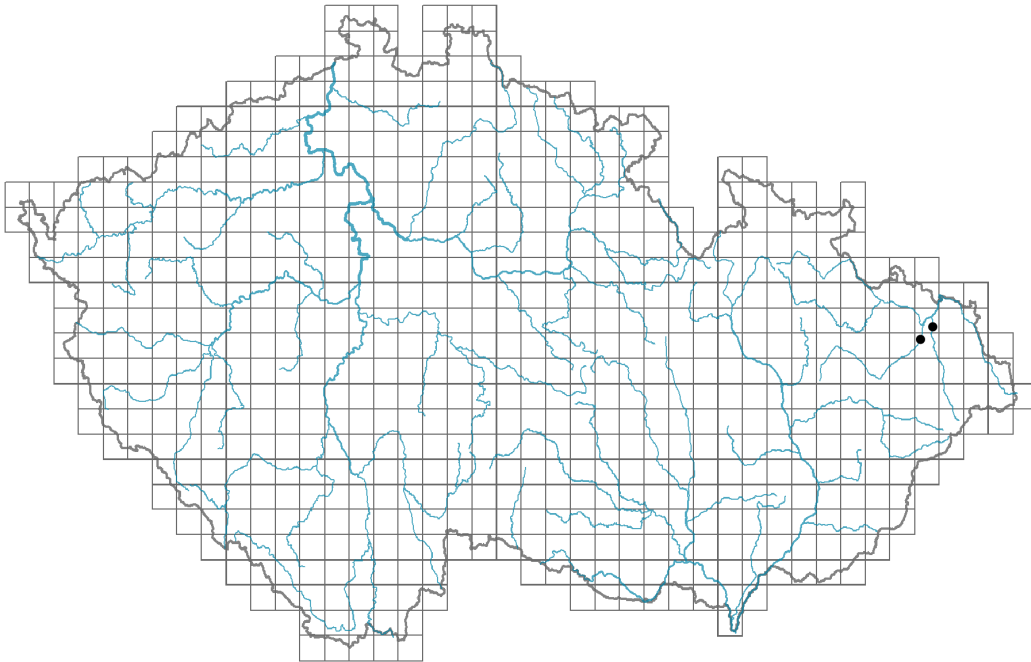


Sedobassia sedoides

Distribution



© Dana Michalčová

Map info

● revised records

○ unrevised records

On the map are not visualized records without the coordinates and records marked as incorrect or doubtful.



© Dana Michalčová

Habitus and growth type

Height [m]: **0.2-0.6**Life form: **therophyte**

Leaf

Leaf presence and metamorphosis: **leaves present, not modified**Leaf arrangement (phyllotaxis): **alternate**Leaf shape: **simple - entire**Stipules: **absent**Petiole: **absent**

Flower

Flowering period [month]: **August-September**Flower colour: **green**Flower symmetry: **actinomorphic**Perianth type: **homochlamydeous**Perianth fusion: **fused**Inflorescence type: **fasciculus**Generative reproduction type: **facultative allogamy**

Fruit, seed and dispersal

Fruit type: **dry fruit - achene/cypsela/samara**

Myrmecochory: **non-myrmecochorous (b)**

Trophic mode

Parasitism and mycoheterotrophy: **autotrophic**

Carnivory: **non-carnivorous**

Symbiotic nitrogen fixation: **no nitrogen-fixing symbionts**

Taxon origin

Origin in the Czech Republic: **neophyte**

Invasion status: **casual**

Geographic origin: **Europe, Mediterranean, Asia**

Year of the first record in the wild: **1960**

Period of introduction: **Recent Past (1950-2000)**

Introduction pathway: **unintentional - industry**

Habitat and sociology

Affinity to the forest environment

Affinity to the forest environment in Thermophyticum: **0 - taxon that does not spontaneously occur in Czech forests**

Affinity to the forest environment in Mesophyticum and Oreophyticum: **0 - taxon that does not spontaneously occur in Czech forests**

Threats and protection

Red List 2017 (national categories): **taxon is not on the Red List**

Red List 2017 (IUCN categories): **LC(NA) - least concern (taxon is not on the Red List)**

Legal protection: **not protected by law**