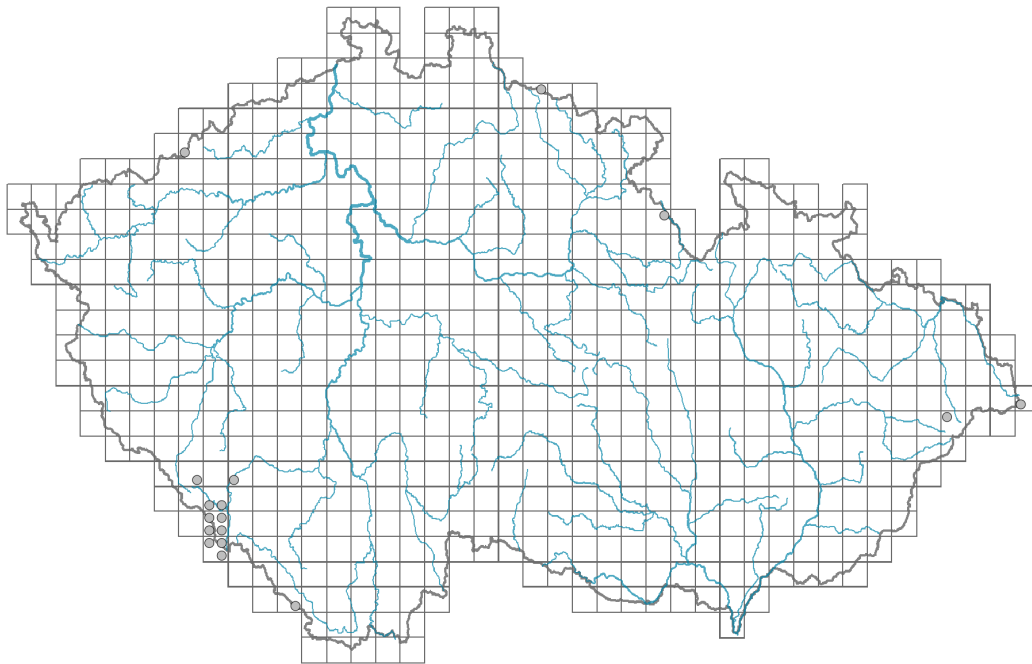


Senecio subalpinus

Distribution



© Vladimír Nejšlechba

Map info

● revised records

○ unrevised records

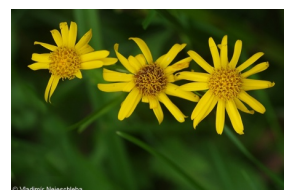
On the map are not visualized records without the coordinates and records marked as incorrect or doubtful.



© Vladimír Nejšlechba



© Vladimír Nejšlechba



© Vladimír Nejšlechba

Habitus and growth type

Height [m]: **0.3-0.7**

Growth form: **clonal herb**

Life form: **hemicryptophyte**

Life strategy: **CS - competitor/stress-tolerator**

Leaf

Leaf presence and metamorphosis: **leaves present, not modified**

Leaf arrangement (phyllotaxis): **alternate**

Leaf shape: **simple - entire, simple - pinnately divided**

Stipules: **absent**

Petiole: **present**

Leaf life span: **evergreen**

Flower

Flowering period [month]: **July-September**

Flowering phase: **6 Cornus sanguinea-Melica uniflora (start of early summer)**

Flower colour: **yellow**

Flower symmetry: **actinomorphic, zygomorphic**

Perianth type: **calyx reduced, corolla present**

Perianth fusion: **fused**

Shape of the sympetalous corolla or syntepalous perianth: **ligulate, tubular**

Calyx fusion: **pappus**

Inflorescence type: **corymbus ex anthodiis compositus**

Dicliny: **gynomonoecious**

Pollination syndrome: **insect-pollination, selfing**

Fruit, seed and dispersal

Fruit type: **dry fruit - achene/cypsela/samara**

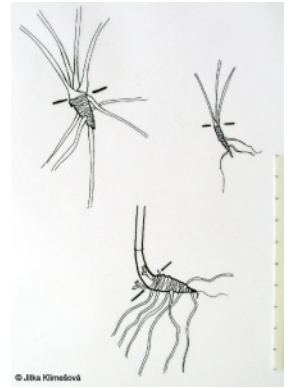
Fruit colour: **brown**

Reproduction type: **by seed/spores and vegetatively**

Dispersal unit (diaspore): **fruit, infrutescence or its part**

Dispersal strategy: **Epilobium (mainly anemochory and autochory)**

Myrmecochory: **probably non-myrmecochorous nv**



Belowground organs and clonality

Shoot metamorphosis: **rhizome**

Storage organ: **rhizome**

Type of clonal growth organ: **epigeogenous rhizome**

Freely dispersible organs of clonal growth: **absent**

Shoot life span (cyclicality): **dicyclic or polycyclic shoots prevailing**

Branching type of stem-derived organs of clonal growth: **sympodial**

Primary root: **absent**

Persistence of the clonal growth organ [year]: **3**

Number of clonal offspring: **1**

Lateral spreading distance by clonal growth [m]: **0.07**

Clonal index: **4**

Bud bank

Number of buds per shoot at the soil surface (root buds excluded): **5**

Number of buds per shoot at a depth of 0–10 cm (root buds excluded): **15**

Number of buds per shoot at a depth greater than 10 cm (root buds excluded): **0**

Size of the belowground bud bank (root buds excluded): **20**

Depth of the belowground bud bank (root buds excluded) [cm]: **4**

Number of buds per shoot at the soil surface (root buds included): **5**

Number of buds per shoot at a depth of 0–10 cm (root buds included): **15**

Number of buds per shoot at a depth greater than 10 cm (root buds included): **0**

Size of the belowground bud bank (root buds included): **20**

Depth of the belowground bud bank (root buds included) [cm]: **4**

Trophic mode

Parasitism and mycoheterotrophy: **autotrophic**

Carnivory: **non-carnivorous**

Symbiotic nitrogen fixation: **no nitrogen-fixing symbionts**

Karyology

Chromosome number (2n): **40**

Ploidy level (x): **4**
2C genome size [Mbp]: **5170.15**
1Cx monoploid genome size [Mbp]: **1292.54**
Genomic GC content: **38.6 %**

Taxon origin

Origin in the Czech Republic: **native**

Ecological indicator values

Ellenberg-type indicator values

Light indicator value: **6 - transition between values 5 and 7; rarely at less than 20% of diffuse radiation incident in an open area**

Temperature indicator value: **4 - transition between values 3 and 5**

Moisture indicator value: **8 - transition between values 7 and 9**

Reaction indicator value: **6 - transition between values 5 and 7**

Nutrient indicator value: **6 - transition between values 5 and 7**

Salinity indicator value: **0 - not salt tolerant, glycophyte**

Habitat and sociology

Occurrence in habitats

5 Vegetation of springs and mires

5B Lowland to montane soft-water springs: **1 - rare occurrence**

5C Alpine and subalpine soft-water springs: **1 - rare occurrence**

12 Forests

12B Alluvial forests: **1 - rare occurrence**

Affinity to the forest environment

Affinity to the forest environment in Mesophyticum and Oreophyticum: **2.1 - taxon occurring both in the forest and open vegetation**

Colonization ability

Index of colonization success (ICS): **1**

Distribution and frequency

Floristic zone: **southern temperate, submeridional**

Floristic region: **Europe**

Continental degree: **5**

Distribution range extension along the continentality gradient: **1**

Elevational belt in the Czech Republic: **montane belt**

Occurrence frequency in the basic grid mapping cells and quadrants of the basic grid mapping cells: **11**

taxon.data.freq_in_quad: **17**

Commonness in vegetation plots from the Czech Republic

Occurrence frequency in vegetation plots: **0 %**

Occurrence frequency in vegetation plots with a cover above 5%: **0 %**

Occurrence frequency in vegetation plots with a cover above 25%: **0 %**

Occurrence frequency in vegetation plots with a cover above 50%: **0 %**

Mean percentage cover in vegetation plots: **3 %**

Maximum percentage cover in vegetation plots: **3 %**

Number of habitats with taxon occurrence in the Czech Republic

Number of narrow habitats in which the taxon occurs: **3**

Number of narrow habitats in which the taxon has its optimum: **0**

Number of broad habitats in which the taxon occurs: **2**

Number of broad habitats in which the taxon has its optimum: **0**

Threats and protection

Red List 2017 (national categories): **C2r - endangered taxon, rare**

Red List 2017 (IUCN categories): **EN - endangered**

Legal protection: **not protected by law**