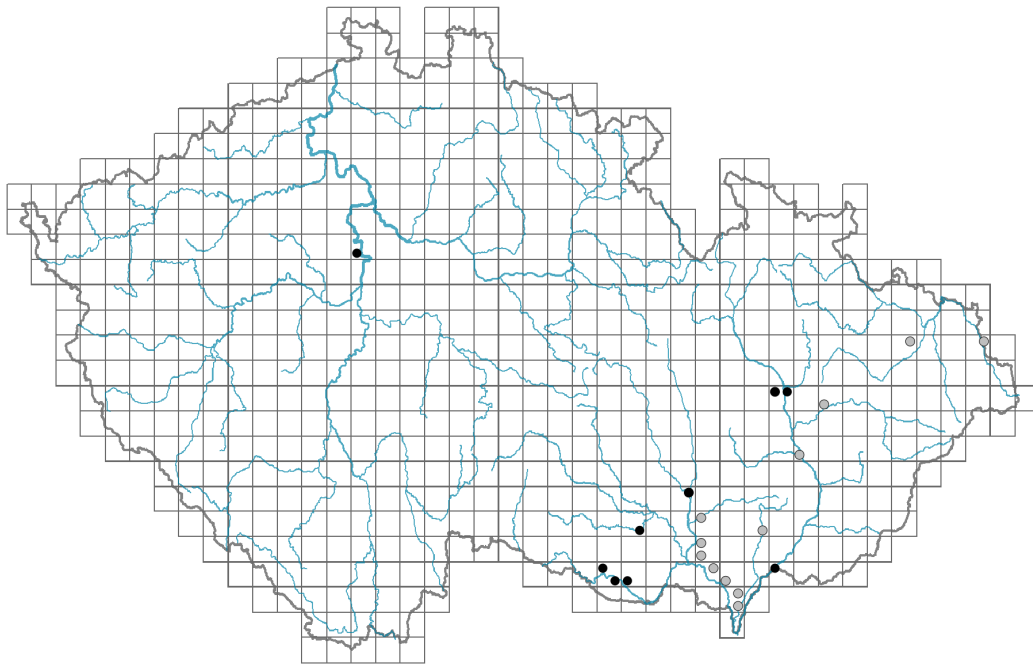


# *Tragus racemosus*

## Distribution



Map info

- revised records
- unrevised records

On the map are not visualized records without the coordinates and records marked as incorrect or doubtful.

## Habitus and growth type

Height [m]: **0.1-0.3**

Growth form: **annual herb**

Life form: **therophyte**

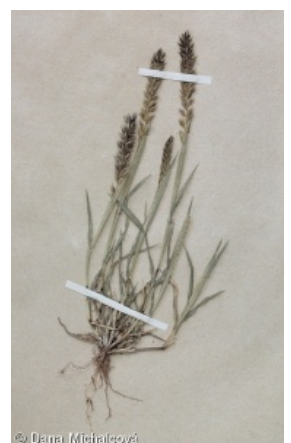
Life strategy: **R - ruderal**

Life strategy (Pierce method based on leaf traits): **S/SR**

Life strategy (Pierce method, C-score): **9 %**

Life strategy (Pierce method, S-score): **70.8 %**

Life strategy (Pierce method, R-score): **20.3 %**



## Leaf

Leaf presence and metamorphosis: **leaves present, not modified**

Leaf arrangement (phyllotaxis): **alternate**

Leaf shape: **simple - entire**

Stipules: **absent**

Petiole: **absent**

Leaf life span: **summer green**

Leaf anatomy: **scleromorphic, mesomorphic**

## Flower

Flowering period [month]: **June-July**

Flower colour: **green**  
 Perianth type: **reduced**  
 Perianth fusion: **reduced**  
 Inflorescence type: **pseudospica e spiculis composita**  
 Dicliny: **synoecious**  
 Pollination syndrome: **wind-pollination**



### Fruit, seed and dispersal

Fruit type: **dry fruit - caryopsis**  
 Fruit colour: **brown**  
 Reproduction type: **only by seed/spores**  
 Dispersal unit (diaspore): **fruit, infrutescence or its part**  
 Dispersal strategy: **Bidens (mainly autochory and epizoochory)**  
 Myrmecochory: **non-myrmecochorous (b)**



### Belowground organs and clonality

Shoot life span (cyclicality): **monocyclic shoots prevailing**  
 Primary root: **absent**

#### Bud bank

Number of buds per shoot at the soil surface (root buds excluded): **5**  
 Number of buds per shoot at a depth of 0–10 cm (root buds excluded): **0**  
 Number of buds per shoot at a depth greater than 10 cm (root buds excluded): **0**  
 Size of the belowground bud bank (root buds excluded): **5**  
 Depth of the belowground bud bank (root buds excluded) [cm]: **1**  
 Number of buds per shoot at the soil surface (root buds included): **5**  
 Number of buds per shoot at a depth of 0–10 cm (root buds included): **0**  
 Number of buds per shoot at a depth greater than 10 cm (root buds included): **0**  
 Size of the belowground bud bank (root buds included): **5**  
 Depth of the belowground bud bank (root buds included) [cm]: **1**



### Trophic mode

Parasitism and mycoheterotrophy: **autotrophic**  
 Carnivory: **non-carnivorous**  
 Symbiotic nitrogen fixation: **no nitrogen-fixing symbionts**



### Taxon origin

Origin in the Czech Republic: **neophyte**  
 Invasion status: **naturalized**  
 Geographic origin: **Mediterranean**  
 Year of the first record in the wild: **1839**  
 Period of introduction: **Present (after 2000)**  
 Introduction pathway: **unintentional - traffic, unintentional - industry**



## Ecological indicator values

Ellenberg-type indicator values

Light indicator value: **8 - light plant, only exceptionally occurring at less than 40% of diffuse radiation incident in an open area**

Temperature indicator value: **8 - transition between values 7 and 9**

Moisture indicator value: **3 - missing on damp soil**

Reaction indicator value: **6x - transition between values 5 and 7 (generalist)**

Nutrient indicator value: **6 - transition between values 5 and 7**

Salinity indicator value: **1 - salt tolerant, mostly on low-salt to salt-free soils, but occasionally on slightly salty soils**

## Habitat and sociology

Occurrence in habitats

13 Anthropogenic vegetation

13A Annual vegetation of ruderal habitats: **2 - optimum**

13B Annual vegetation of arable land: **1 - rare occurrence**

13D Perennial thermophilous ruderal vegetation: **1 - rare occurrence**

Affinity to the forest environment

Affinity to the forest environment in Thermophyticum: **0 - taxon that does not spontaneously occur in Czech forests**

Affinity to the forest environment in Mesophyticum and Oreophyticum: **0 - taxon that does not spontaneously occur in Czech forests**

## Distribution and frequency

Floristic zone: **southern temperate, submeridional, meridional, subtropical, tropical, austral or antarctic**

Floristic region: **Europe, Asia, Africa, circumpolar**

Distribution range extension along the continentality gradient: **6**

Elevational belt in the Czech Republic: **lowlands, colline belt**

Occurrence frequency in the basic grid mapping cells and quadrants of the basic grid mapping cells: 17

taxon.data.freq\_in\_quad: 21

Number of habitats with taxon occurrence in the Czech Republic

Number of narrow habitats in which the taxon occurs: **3**

Number of narrow habitats in which the taxon has its optimum: **1**

Number of broad habitats in which the taxon occurs: **1**

Number of broad habitats in which the taxon has its optimum: **1**

## Threats and protection

Red List 2017 (national categories): **taxon is not on the Red List**

Red List 2017 (IUCN categories): **LC(NA) - least concern (taxon is not on the Red List)**

Legal protection: **not protected by law**