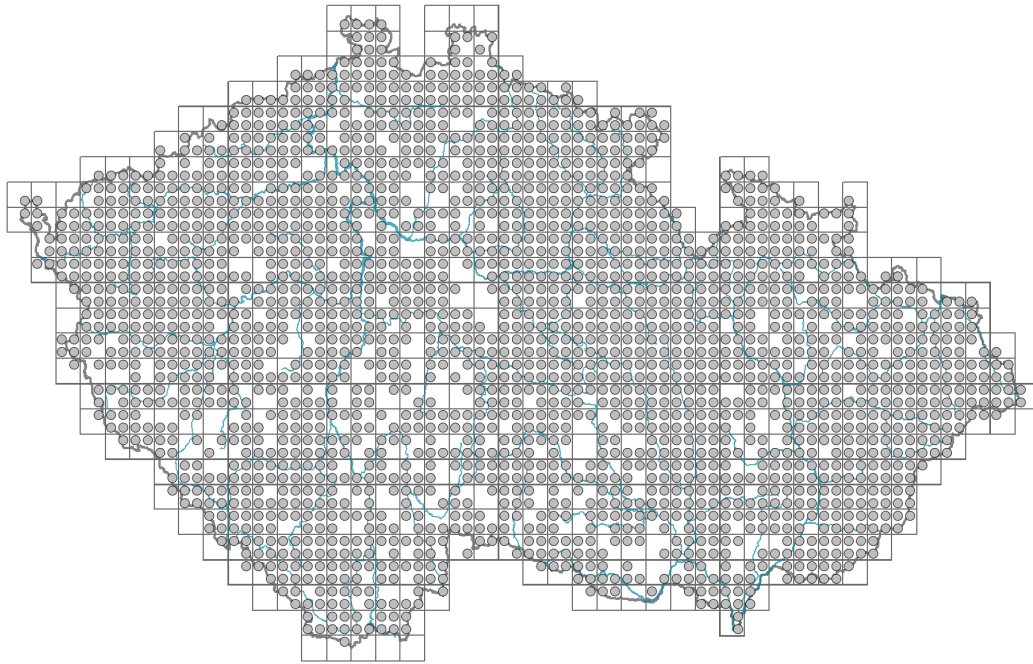


Tussilago farfara

Distribution



Map info

● revised records

○ unrevised records

On the map are not visualized records without the coordinates and records marked as incorrect or doubtful.



Habitus and growth type

Height [m]: **0.1-0.3**

Growth form: **clonal herb**

Life form: **geophyte**

Life strategy: **CSR - competitor/stress-tolerator/ruderal**

Life strategy (Pierce method based on leaf traits): **C**

Life strategy (Pierce method, C-score): **87.5 %**

Life strategy (Pierce method, S-score): **0 %**

Life strategy (Pierce method, R-score): **12.5 %**

Leaf

Leaf presence and metamorphosis: **leaves present, not modified**

Leaf arrangement (phyllotaxis): **alternate, rosulate**

Leaf shape: **simple - entire**

Stipules: **absent**

Petiole: **both present and absent**

Leaf life span: **summer green**

Leaf anatomy: **mesomorphic**

Flower

Flowering period [month]: **March-May**

Flowering phase: **1 Corylus avellana-Leucojum vernum (pre-spring)**

Flower colour: **yellow**

Flower symmetry: **actinomorphic, zygomorphic**

Perianth type: **calyx reduced, corolla present**

Perianth fusion: **fused**

Shape of the sympetalous corolla or syntepalous perianth: **ligulate, tubular**

Calyx fusion: **pappus**

Inflorescence type: **anthodium solitarium**

Dicliny: **monoecious**

Generative reproduction type: **alogamy self-incompatibility**

Pollination syndrome: **insect-pollination, geitonogamy**

Pollinator spectrum: **flies s. l., meat flies s. l., other Diptera (honeybee, bumblebees, solitary bees, other Hymenoptera, hoverflies, butterflies, beetles, nitidulids, thrips, other pollinators)**

Fruit, seed and dispersal

Fruit type: **dry fruit - achene/cypsela/samara**

Fruit colour: **brown**

Reproduction type: **by seed/spores and vegetatively**

Dispersal unit (diaspore): **fruit, infrutescence or its part**

Dispersal strategy: **Epilobium (mainly anemochory and autochory)**

Myrmecochory: **probably myrmecochorous**

Belowground organs and clonality

Shoot metamorphosis: **stolon**

Storage organ: **stolon**

Type of clonal growth organ: **hypogeogenous rhizome**

Freely dispersible organs of clonal growth: **absent**

Shoot life span (cyclicality): **dicyclic or polycyclic shoots prevailing**

Branching type of stem-derived organs of clonal growth: **sympodial**

Primary root: **absent**

Persistence of the clonal growth organ [year]: **2.7**

Number of clonal offspring: **5.2**

Lateral spreading distance by clonal growth [m]: **0.3**

Clonal index: **6**

Bud bank

Number of buds per shoot at the soil surface (root buds excluded): **5**

Number of buds per shoot at a depth of 0–10 cm (root buds excluded): **15**

Number of buds per shoot at a depth greater than 10 cm (root buds excluded): **4**

Size of the belowground bud bank (root buds excluded): **24**

Depth of the belowground bud bank (root buds excluded) [cm]: **6**

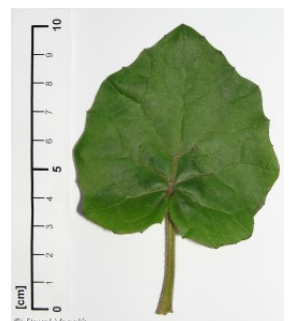
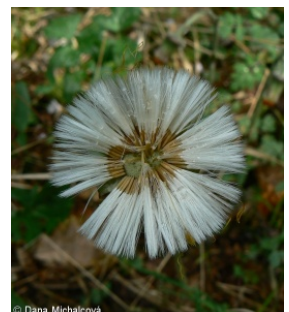
Number of buds per shoot at the soil surface (root buds included): **5**

Number of buds per shoot at a depth of 0–10 cm (root buds included): **15**

Number of buds per shoot at a depth greater than 10 cm (root buds included): **4**

Size of the belowground bud bank (root buds included): **24**

Depth of the belowground bud bank (root buds included) [cm]: **6**



Trophic mode

Parasitism and mycoheterotrophy: **autotrophic**

Carnivory: **non-carnivorous**

Symbiotic nitrogen fixation: **no nitrogen-fixing symbionts**

Karyology

Chromosome number (2n): **60**

Ploidy level (x): **2**

2C genome size [Mbp]: **3160.79**

1Cx monoploid genome size [Mbp]: **1580.39**

Genomic GC content: **37.8 %**

Taxon origin

Origin in the Czech Republic: **native**

Ecological indicator values

Ellenberg-type indicator values

Light indicator value: **8 - light plant, only exceptionally occurring at less than 40% of diffuse radiation incident in an open area**

Temperature indicator value: **5 - moderate heat indicator, occurring from lowland to montane belt, mainly in submontane-temperate areas**

Moisture indicator value: **6 - transition between values 5 and 7**

Reaction indicator value: **7 - indicator of slightly acidic to slightly basic conditions, never occurring in very acidic conditions**

Nutrient indicator value: **6x - transition between values 5 and 7 (generalist)**

Salinity indicator value: **0 - not salt tolerant, glycophyte**

Indicator values for disturbance

Whole-community disturbance frequency indicator value: **-0.61**

Herb layer disturbance frequency indicator value: **-0.28**

Whole-community disturbance severity indicator value: **0.64**

Herb layer disturbance severity indicator value: **0.64**

Whole-community structure based disturbance indicator value: **0.54**

Herb layer structure-based disturbance indicator value: **0.62**

Habitat and sociology

Occurrence in habitats

4 Wetland and riverine herbaceous vegetation

4A Reed-beds of eutrophic still waters: **1 - rare occurrence**

4D Riverine reed vegetation: **1 - rare occurrence**

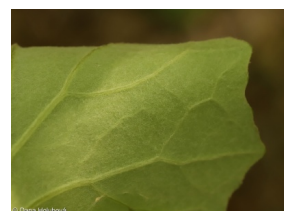
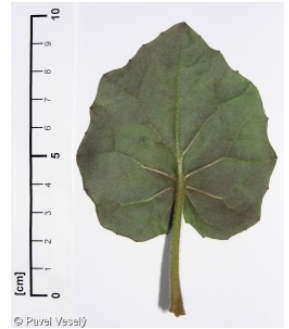
4E Reed vegetation of brooks: **1 - rare occurrence**

4H Vegetation of low annual hygrophilous herbs: **1 - rare occurrence**

4I Vegetation of nitrophilous annual hygrophilous herbs: **1 - rare occurrence**

4K Petasites fringes of montane brooks: **1 - rare occurrence**

4L Nitrophilous herbaceous fringes of lowland rivers: **1 - rare occurrence**



5 Vegetation of springs and mires

5A Hard-water springs with tufa formation: **1 - rare occurrence**

5B Lowland to montane soft-water springs: **1 - rare occurrence**

5D Calcareous fens: **2 - optimum**

5E Acidic moss-rich fens and peatland meadows: **1 - rare occurrence**

6 Meadows and mesic pastures

6A Mesic Arrhenatherum meadows: **1 - rare occurrence**

6B Montane mesic meadows: **1 - rare occurrence**

6C Pastures and park grasslands: **1 - rare occurrence**

6D Alluvial meadows of lowland rivers: **1 - rare occurrence**

6E Wet Cirsium meadows: **1 - rare occurrence**

6F Intermittently wet Molinia meadows: **1 - rare occurrence**

6G Vegetation of wet disturbed soils: **1 - rare occurrence**

7 Acidophilous grasslands

7B Submontane Nardus grasslands: **1 - rare occurrence**

8 Dry grasslands

8D Broad-leaved dry grasslands: **1 - rare occurrence**

8F Thermophilous forest fringe vegetation: **1 - rare occurrence**

10 Saline vegetation

10I Inland saline meadows: **1 - rare occurrence**

11 Heathlands and scrub

11J Willow galleries of loamy and sandy river banks: **1 - rare occurrence**

11R Scrub and pioneer woodland of forests clearings: **1 - rare occurrence**

12 Forests

12A Alder carrs: **1 - rare occurrence**

12B Alluvial forests: **1 - rare occurrence**

12E Herb-rich beech forests: **1 - rare occurrence**

12F Limestone beech forests: **1 - rare occurrence**

12V Spruce plantations: **1 - rare occurrence**

12W Pine and larch plantations: **1 - rare occurrence**

13 Anthropogenic vegetation

13A Annual vegetation of ruderal habitats: **2 - optimum**

13B Annual vegetation of arable land: **2 - optimum**

13D Perennial thermophilous ruderal vegetation: **3 - dominant**

13E Perennial nitrophilous herbaceous vegetation of mesic sites: **2 - optimum**

13F Herbaceous vegetation of forests clearings and Rubus scrub: **1 - rare occurrence**

Affinity to the forest environment

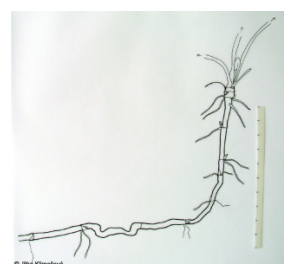
Affinity to the forest environment in Thermophyticum: **0 - taxon that does not spontaneously occur in Czech forests**

Affinity to the forest environment in Mesophyticum and Oreophyticum: **0 - taxon that does not spontaneously occur in Czech forests**

Diagnostic taxon

Diagnostic taxon of alliances: [KAB Salicion elaeagno-daphnoidis](#)

Diagnostic taxon of associations: [KAB01 Salicetum elaeagno-purpureae](#), [RBA02 Carici flavae-Cratoneuretum filicini](#), [XCB05 Poo compressae-Tussilaginatum farfarae](#)



Constant taxon

Constant taxon of alliances: [KAB Salicion elaeagno-daphnoidis](#)

Constant taxon of associations: [KAB01 Salicetum elaeagno-purpureae](#), [KAB03 Salici purpureae-Myricarietum germanicae](#), [RBA02 Carici flavae-Cratoneuretum filicini](#), [XCB05 Poo compressae-Tussilaginetum farfarae](#)

Dominant taxon

Dominant taxon of associations: [XCB05 Poo compressae-Tussilaginetum farfarae](#)

Ecological specialization indices

Ecological specialization index for all vegetation types: **3.4**

Ecological specialization index for non-forest vegetation: **3.5**

Ecological specialization index for forest vegetation: **4.3**

Colonization ability

Index of colonization success (ICS): **8**

Index of colonization potential (ICP): **8**

Optimum successional age [years]: **12**

Distribution and frequency

Floristic zone: **boreal, northern temperate, southern temperate, submeridional, meridional**

Floristic region: **Europe, Western Asia**

Distribution range extension along the continentality gradient: **7**

Elevational belt in the Czech Republic: **lowlands, colline belt, submontane belt, montane belt (subalpine belt)**

Expansive taxon in the region: **Bohemian Thermophyticum, Bohemian Moravian Mesophyticum, Bohemian Moravian Oreophyticum, Carpathian Mesophyticum, Carpathian Oreophyticum**

Occurrence frequency in the basic grid mapping cells and quadrants of the basic grid mapping cells: **658**

taxon.data.freq_in_quad: **2163**

Commonness in vegetation plots from the Czech Republic

Occurrence frequency in vegetation plots: **2.4 %**

Occurrence frequency in vegetation plots with a cover above 5%: **21.4 %**

Occurrence frequency in vegetation plots with a cover above 25%: **13.5 %**

Occurrence frequency in vegetation plots with a cover above 50%: **9.3 %**

Mean percentage cover in vegetation plots: **11.2 %**

Maximum percentage cover in vegetation plots: **99 %**

Number of habitats with taxon occurrence in the Czech Republic

Number of narrow habitats in which the taxon occurs: **35**

Number of narrow habitats in which the taxon has its optimum: **5**

Number of broad habitats in which the taxon occurs: **9**

Number of broad habitats in which the taxon has its optimum: **2**

Threats and protection

Red List 2017 (national categories): **taxon is not on the Red List**

Red List 2017 (IUCN categories): **LC(NA) - least concern (taxon is not on the Red List)**

Legal protection: **not protected by law**