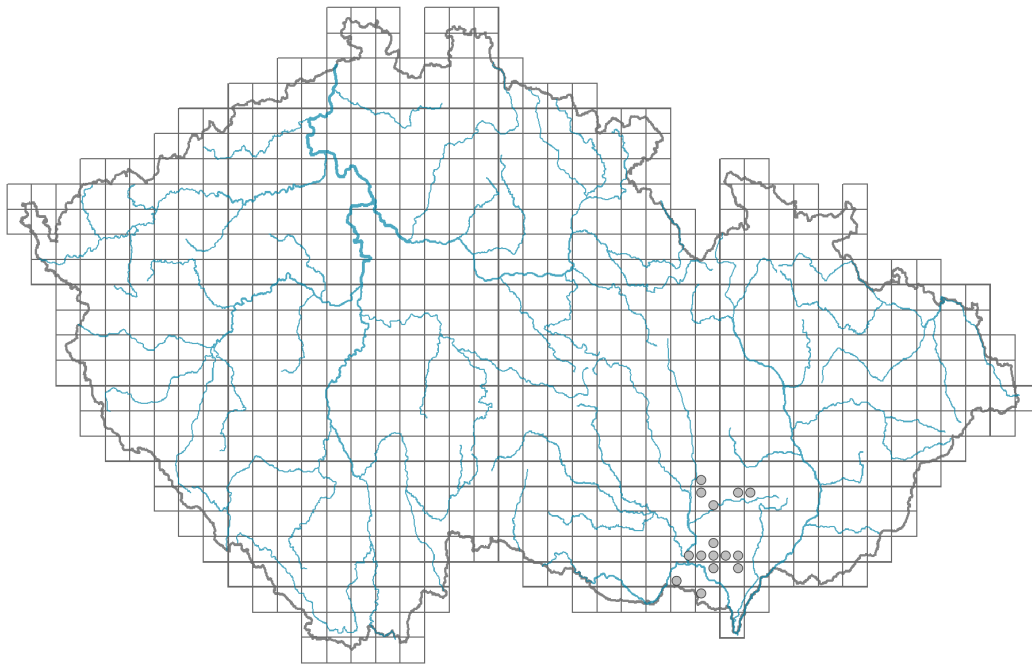


Campanula sibirica subsp. *sibirica*

Distribution



© Aleš Moravec

Map info

● revised records

○ unrevised records

On the map are not visualized records without the coordinates and records marked as incorrect or doubtful.



© Dana Michalová



© Dana Michalová



© Dana Michalová

Habitus and growth type

Height [m]: **0.15-0.4**

Growth form: **monocarpic perennial non-clonal herb**

Life form: **hemicryptophyte**

Life strategy: **CSR - competitor/stress-tolerator/ruderal**

Life strategy (Pierce method based on leaf traits): **SR/CSR**

Life strategy (Pierce method, C-score): **21.8 %**

Life strategy (Pierce method, S-score): **45.3 %**

Life strategy (Pierce method, R-score): **33 %**

Leaf

Leaf presence and metamorphosis: **leaves present, not modified**

Leaf arrangement (phyllotaxis): **alternate, rosulate**

Leaf shape: **simple - entire**

Stipules: **absent**

Petiole: **both present and absent**

Leaf life span: **summer green**

Leaf anatomy: **scleromorphic, mesomorphic**

Flower

Flowering period [month]: **June-July**

Flower colour: **blue-violet**
 Flower symmetry: **actinomorphic**
 Perianth type: **calyx and corolla**
 Perianth fusion: **fused**
 Shape of the sympetalous corolla or syntepalous perianth: **campanulate**
 Calyx fusion: **synsepalous**
 Inflorescence type: **racemus, panicula**
 Dicliny: **synoecious**
 Generative reproduction type: **allogamy**
 Pollination syndrome: **insect-pollination**

Fruit, seed and dispersal

Fruit type: **dry fruit - capsule**
 Fruit colour: **brown**
 Reproduction type: **only by seed/spores**
 Dispersal unit (diaspore): **seed**
 Dispersal strategy: **Allium (mainly autochory)**
 Myrmecochory: **non-myrmecochorous (b)**

Belowground organs and clonality

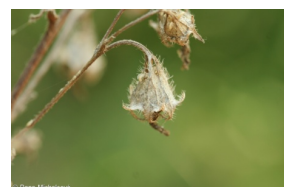
Root metamorphosis: **primary storage root**
 Storage organ: **primary storage root**
 Shoot life span (cyclicality): **dicyclic or polycyclic shoots prevailing**
 Primary root: **present**
 Bud bank
 Number of buds per shoot at the soil surface (root buds excluded): **5**
 Number of buds per shoot at a depth of 0–10 cm (root buds excluded): **5**
 Number of buds per shoot at a depth greater than 10 cm (root buds excluded): **0**
 Size of the belowground bud bank (root buds excluded): **10**
 Depth of the belowground bud bank (root buds excluded) [cm]: **3**
 Number of buds per shoot at the soil surface (root buds included): **5**
 Number of buds per shoot at a depth of 0–10 cm (root buds included): **5**
 Number of buds per shoot at a depth greater than 10 cm (root buds included): **0**
 Size of the belowground bud bank (root buds included): **10**
 Depth of the belowground bud bank (root buds included) [cm]: **3**

Trophic mode

Parasitism and mycoheterotrophy: **autotrophic**
 Carnivory: **non-carnivorous**
 Symbiotic nitrogen fixation: **no nitrogen-fixing symbionts**

Karyology

Chromosome number (2n): **34**
 Ploidy level (x): **2**
 2C genome size [Mbp]: **2645.92**



1Cx monoploid genome size [Mbp]: **1322.96**

Genomic GC content: **41.7 %**

Taxon origin

Origin in the Czech Republic: **native**

Ecological indicator values

Ellenberg-type indicator values

Light indicator value: **8 - light plant, only exceptionally occurring at less than 40% of diffuse radiation incident in an open area**

Temperature indicator value: **8 - transition between values 7 and 9**

Moisture indicator value: **2 - transition between values 1 and 3**

Reaction indicator value: **8 - transition between values 7 and 9, occurring mostly in calcium-rich conditions**

Nutrient indicator value: **3 - occurring at nutrient-poor sites more frequently than at average sites and exceptionally at rich sites**

Salinity indicator value: **0 - not salt tolerant, glycophyte**

Indicator values for disturbance

Whole-community disturbance frequency indicator value: **-0.09**

Herb layer disturbance frequency indicator value: **-0.09**

Whole-community disturbance severity indicator value: **0.19**

Herb layer disturbance severity indicator value: **0.24**

Whole-community structure based disturbance indicator value: **0.7**

Herb layer structure-based disturbance indicator value: **0.81**

Habitat and sociology

Occurrence in habitats

1 Vegetation of cliffs, screes and walls

1D Mobile calcareous screes: **2 - optimum**

8 Dry grasslands

8B Submediterranean dry grasslands on rock outcrops: **2 - optimum**

8C Narrow-leaved sub-continental steppes: **2 - optimum**

8D Broad-leaved dry grasslands: **2 - optimum**

Affinity to the forest environment

Affinity to the forest environment in Thermophyticum: **0 - taxon that does not spontaneously occur in Czech forests**

Affinity to the forest environment in Mesophyticum and Oreophyticum: **0 - taxon that does not spontaneously occur in Czech forests**

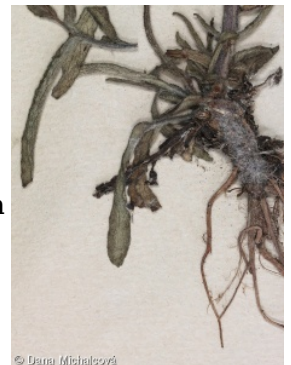
Diagnostic taxon

Diagnostic taxon of alliances: [THB Bromo pannonici-Festucion pallentis](#)

Diagnostic taxon of associations: [SCA03 Teucrio botryos-Melicetum ciliatae](#), [THB01 Poo badensis-Festucetum pallentis](#), [THC02 Minuartio setaceae-Seslerietum caeruleae](#), [THD06 Astragalo exscapi-Crambetum tatariae](#)

Constant taxon

Constant taxon of associations: [SCA03 Teucrio botryos-Melicetum ciliatae](#), [THC02](#)



Minuartia setacea-Seslerietum caeruleae*, THD06 *Astragalo excapi-Crambetum tatariae



Ecological specialization indices

Ecological specialization index for all vegetation types: **6.3**

Ecological specialization index for non-forest vegetation: **6.3**

Colonization ability

Index of colonization success (ICS): **3**

Index of colonization potential (ICP): **4**

Optimum successional age [years]: **30**

Distribution and frequency

Floristic zone: **northern temperate, southern temperate, submeridional**

Floristic region: **Europe, Western Siberia**

Continental degree: **7**

Distribution range extension along the continentality gradient: **3**

Elevational belt in the Czech Republic: **lowlands, colline belt**

Occurrence frequency in the basic grid mapping cells and quadrants of the basic grid mapping cells: **30**

taxon.data.freq_in_quad: **62**

Commonness in vegetation plots from the Czech Republic

Occurrence frequency in vegetation plots: **0.2 %**

Occurrence frequency in vegetation plots with a cover above 5%: **3.8 %**

Occurrence frequency in vegetation plots with a cover above 25%: **0 %**

Occurrence frequency in vegetation plots with a cover above 50%: **0 %**

Mean percentage cover in vegetation plots: **2.5 %**

Maximum percentage cover in vegetation plots: **13 %**

Number of habitats with taxon occurrence in the Czech Republic

Number of narrow habitats in which the taxon occurs: **4**

Number of narrow habitats in which the taxon has its optimum: **4**

Number of broad habitats in which the taxon occurs: **2**

Number of broad habitats in which the taxon has its optimum: **2**

Threats and protection

Red List 2017 (national categories): **C3 - vulnerable taxon**

Red List 2017 (IUCN categories): **NT - near threatened**

Legal protection: **vulnerable taxon**