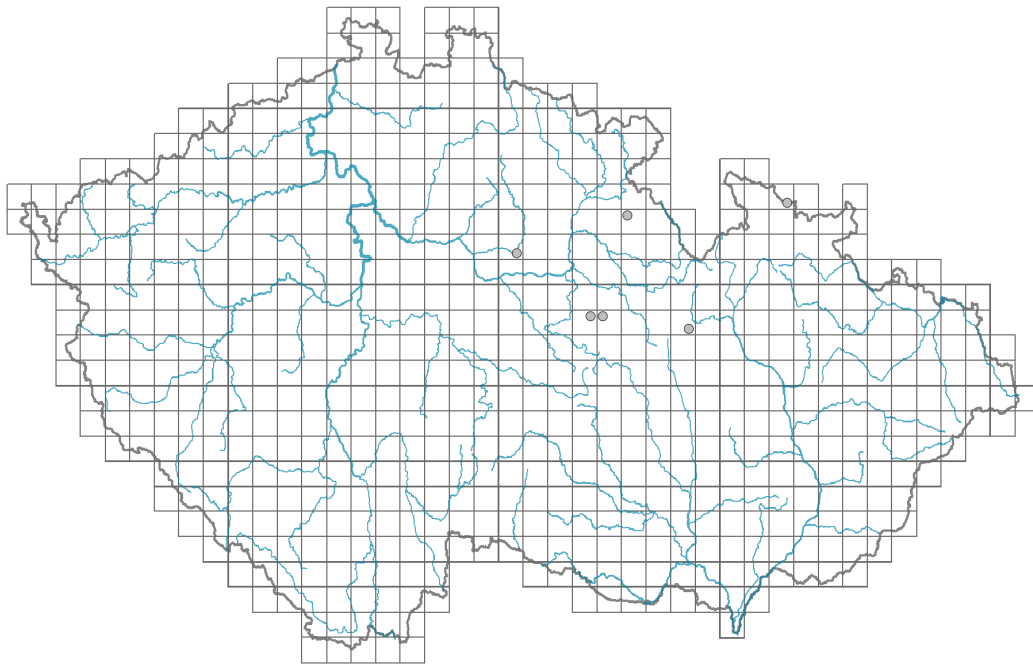


Centaureum erythraea subsp. *erythraea*

Distribution



© Pavel Veselý

Map info

● revised records

● unrevised records

On the map are not visualized records without the coordinates and records marked as incorrect or doubtful.

Habitus and growth type

Height [m]: **0.1-0.6**Growth form: **annual herb**Life form: **therophyte**Life strategy: **SR - stress-tolerator/ruderal**Life strategy (Pierce method based on leaf traits): **SR/CSR**Life strategy (Pierce method, C-score): **12.5 %**Life strategy (Pierce method, S-score): **47.9 %**Life strategy (Pierce method, R-score): **39.6 %**

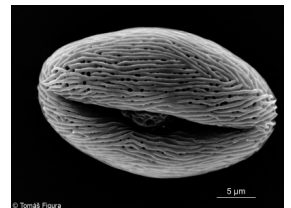
Leaf

Leaf presence and metamorphosis: **leaves present, not modified**Leaf arrangement (phyllotaxis): **opposite, rosulate**Leaf shape: **simple - entire**Stipules: **absent**Petiole: **absent**Leaf life span: **overwintering green**Leaf anatomy: **mesomorphic**

Flower

Flowering phase: **8 Clematis vitalba-Galium sylvaticum (mid-summer)**

© Dana Michalová



© Tomáš Fajstl



© Josef Hájek

Flower colour: **white, pink**
 Flower symmetry: **actinomorphic**
 Perianth type: **calyx and corolla**
 Perianth fusion: **fused**
 Shape of the sympetalous corolla or syntepalous perianth: **hypocrateriform**
 Calyx fusion: **synsepalous**
 Inflorescence type: **corymbothsus**
 Dicliny: **synoecious**
 Generative reproduction type: **mixed mating**
 Pollination syndrome: **insect-pollination, selfing**



Fruit, seed and dispersal

Fruit type: **dry fruit - capsule**
 Fruit colour: **brown**
 Reproduction type: **only by seed/spores**
 Dispersal unit (diaspore): **seed**
 Dispersal strategy: **Allium (mainly autochory)**
 Myrmecochory: **non-myrmecochorous (b)**



Belowground organs and clonality

Shoot life span (cyclicality): **monocyclic shoots prevailing**

Primary root: **present**

Bud bank

Number of buds per shoot at the soil surface (root buds excluded): **5**
 Number of buds per shoot at a depth of 0–10 cm (root buds excluded): **0**
 Number of buds per shoot at a depth greater than 10 cm (root buds excluded): **0**
 Size of the belowground bud bank (root buds excluded): **5**
 Depth of the belowground bud bank (root buds excluded) [cm]: **1**
 Number of buds per shoot at the soil surface (root buds included): **5**
 Number of buds per shoot at a depth of 0–10 cm (root buds included): **0**
 Number of buds per shoot at a depth greater than 10 cm (root buds included): **0**
 Size of the belowground bud bank (root buds included): **5**
 Depth of the belowground bud bank (root buds included) [cm]: **1**



Trophic mode

Parasitism and mycoheterotrophy: **autotrophic**
 Carnivory: **non-carnivorous**
 Symbiotic nitrogen fixation: **no nitrogen-fixing symbionts**

Karyology

Chromosome number (2n): **20, 40, 42**
 Ploidy level (x): **2, 4**
 2C genome size [Mbp]: **1857.87**
 1Cx monoploid genome size [Mbp]: **464.47**
 Genomic GC content: **39.9 %**



Taxon origin

Origin in the Czech Republic: **native**

Ecological indicator values

Ellenberg-type indicator values

Light indicator value: **8 - light plant, only exceptionally occurring at less than 40% of diffuse radiation incident in an open area**

Temperature indicator value: **6 - transition between values 5 and 7**

Moisture indicator value: **5 - indicator of fresh soils, focus on soils of average moisture, missing on wet and on soils that frequently dry out**

Reaction indicator value: **6 - transition between values 5 and 7**

Nutrient indicator value: **5 - occurring at moderately nutrient-rich sites, and less frequently at poor and rich sites**

Salinity indicator value: **0 - not salt tolerant, glycophyte**

Indicator values for disturbance

Whole-community disturbance frequency indicator value: **-0.74**

Herb layer disturbance frequency indicator value: **-0.2**

Whole-community disturbance severity indicator value: **0.29**

Herb layer disturbance severity indicator value: **0.3**

Whole-community structure based disturbance indicator value: **0.49**

Herb layer structure-based disturbance indicator value: **0.61**

Habitat and sociology

Occurrence in habitats

6 Meadows and mesic pastures

6A Mesic Arrhenatherum meadows: **2 - optimum**

6C Pastures and park grasslands: **2 - optimum**

6F Intermittently wet Molinia meadows: **1 - rare occurrence**

6G Vegetation of wet disturbed soils: **2 - optimum**

7 Acidophilous grasslands

7B Submontane Nardus grasslands: **2 - optimum**

8 Dry grasslands

8F Thermophilous forest fringe vegetation: **2 - optimum**

11 Heathlands and scrub

11A Dry lowland to subalpine heathlands: **1 - rare occurrence**

11L Tall mesic and xeric shrub: **1 - rare occurrence**

11R Scrub and pioneer woodland of forests clearings: **1 - rare occurrence**

12 Forests

12I Sub-continental thermophilous oak forests: **1 - rare occurrence**

12J Acidophilous thermophilous oak forests: **1 - rare occurrence**

13 Anthropogenic vegetation

13F Herbaceous vegetation of forests clearings and Rubus scrub: **2 - optimum**

Affinity to the forest environment

Affinity to the forest environment in Thermophyticum: **2.2 - taxon occurring partly in**



the forest, but mainly in open vegetation

Affinity to the forest environment in Mesophyticum and Oreophyticum: **2.2 - taxon occurring partly in the forest, but mainly in open vegetation**

Ecological specialization indices

Ecological specialization index for all vegetation types: **5.1**

Ecological specialization index for non-forest vegetation: **5.2**

Colonization ability

Index of colonization success (ICS): **2**

Index of colonization potential (ICP): **6**

Optimum successional age [years]: **3**

Distribution and frequency

Floristic zone: **northern temperate, southern temperate, submeridional, meridional**

Floristic region: **Europe, Western Asia**

Distribution range extension along the continentality gradient: **5**

Elevational belt in the Czech Republic: **lowlands, colline belt, submontane belt**

Occurrence frequency in the basic grid mapping cells and quadrants of the basic grid mapping cells: **516**

taxon.data.freq_in_quad: **1240**

Commonness in vegetation plots from the Czech Republic

Occurrence frequency in vegetation plots: **0.2 %**

Occurrence frequency in vegetation plots with a cover above 5%: **0 %**

Occurrence frequency in vegetation plots with a cover above 25%: **0 %**

Occurrence frequency in vegetation plots with a cover above 50%: **0 %**

Mean percentage cover in vegetation plots: **1.8 %**

Maximum percentage cover in vegetation plots: **3 %**

Number of habitats with taxon occurrence in the Czech Republic

Number of narrow habitats in which the taxon occurs: **12**

Number of narrow habitats in which the taxon has its optimum: **6**

Number of broad habitats in which the taxon occurs: **6**

Number of broad habitats in which the taxon has its optimum: **4**

Threats and protection

Red List 2017 (national categories): **C4a - near threatened taxon**

Red List 2017 (IUCN categories): **LC - least concern**

Legal protection: **not protected by law**