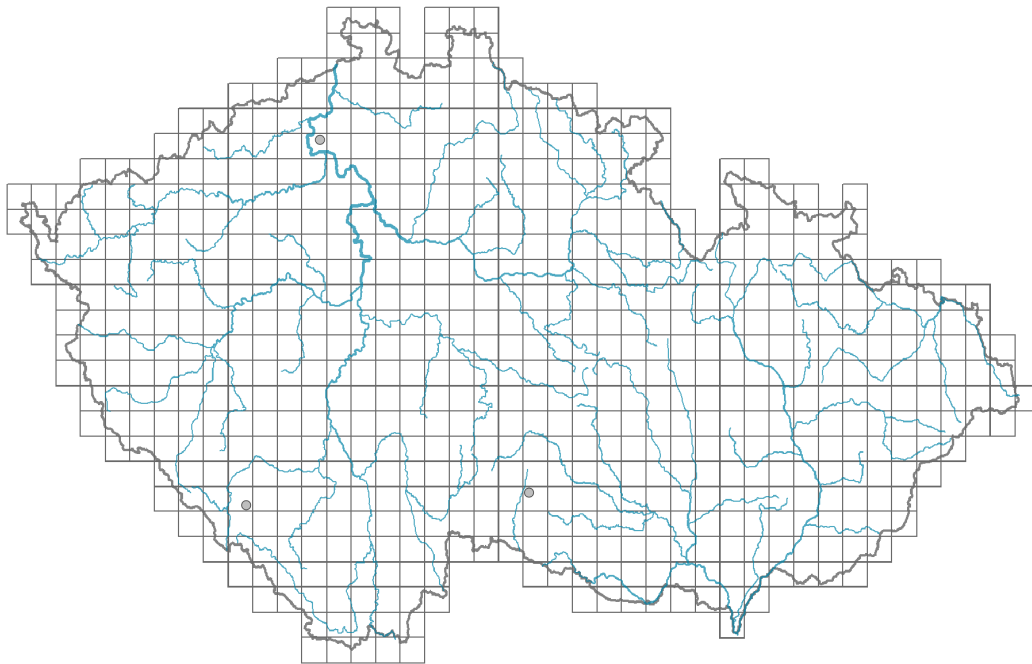


Petasites hybridus subsp. *hybridus*

Distribution



Map info

- revised records
- unrevised records

On the map are not visualized records without the coordinates and records marked as incorrect or doubtful.



Habitus and growth type

Height [m]: **0.1-1.3**

Growth form: **clonal herb**

Life form: **hemicryptophyte (geophyte)**

Life strategy: **CS - competitor/stress-tolerator**

Life strategy (Pierce method based on leaf traits): **C**

Life strategy (Pierce method, C-score): **85.9 %**

Life strategy (Pierce method, S-score): **4.7 %**

Life strategy (Pierce method, R-score): **9.4 %**

Leaf

Leaf presence and metamorphosis: **leaves present, not modified**

Leaf arrangement (phyllotaxis): **alternate**

Leaf shape: **simple - entire**

Stipules: **absent**

Petiole: **both present and absent**

Leaf life span: **summer green**

Leaf anatomy: **mesomorphic, helomorphic**

Flower

Flowering period [month]: **March-May**

Flowering phase: **2 Acer platanoides-Anemone nemorosa (start of early spring)**

Flower colour: **pink**

Flower symmetry: **actinomorphic**

Perianth type: **calyx reduced, corolla present**

Perianth fusion: **fused**

Shape of the sympetalous corolla or syntepalous perianth: **tubular**

Calyx fusion: **pappus**

Inflorescence type: **racemus ex anthodiis compositus, panicula ex anthodiis composita**

Dicliny: **dioecious**

Generative reproduction type: **allogamy**

Pollination syndrome: **insect-pollination**

Fruit, seed and dispersal

Fruit type: **dry fruit - achene/cypsela/samara**

Fruit colour: **white, brown**

Reproduction type: **by seed/spores and vegetatively**

Dispersal unit (diaspore): **fruit, infrutescence or its part**

Dispersal strategy: **Phragmites (mainly anemochory and hydrochory)**

Myrmecochory: **probably myrmecochorous**

Belowground organs and clonality

Shoot metamorphosis: **stolon-like rhizome**

Storage organ: **stolon-like rhizome**

Type of clonal growth organ: **hypogeogenous rhizome**

Freely dispersible organs of clonal growth: **absent**

Shoot life span (cyclicality): **dicyclic or polycyclic shoots prevailing**

Branching type of stem-derived organs of clonal growth: **sympodial**

Primary root: **absent**

Persistence of the clonal growth organ [year]: **3.8**

Number of clonal offspring: **0.8**

Lateral spreading distance by clonal growth [m]: **0.25**

Clonal index: **5**

Bud bank

Number of buds per shoot at the soil surface (root buds excluded): **5**

Number of buds per shoot at a depth of 0–10 cm (root buds excluded): **15**

Number of buds per shoot at a depth greater than 10 cm (root buds excluded): **5**

Size of the belowground bud bank (root buds excluded): **25**

Depth of the belowground bud bank (root buds excluded) [cm]: **6**

Number of buds per shoot at the soil surface (root buds included): **5**

Number of buds per shoot at a depth of 0–10 cm (root buds included): **15**

Number of buds per shoot at a depth greater than 10 cm (root buds included): **5**

Size of the belowground bud bank (root buds included): **25**

Depth of the belowground bud bank (root buds included) [cm]: **6**



Trophic mode

Parasitism and mycoheterotrophy: **autotrophic**

Carnivory: **non-carnivorous**

Symbiotic nitrogen fixation: **no nitrogen-fixing symbionts**

Karyology

Chromosome number (2n): **60**

Ploidy level (x): **2**

2C genome size [Mbp]: **5230.54**

1Cx monoploid genome size [Mbp]: **2615.27**

Genomic GC content: **37.8 %**

Taxon origin

Origin in the Czech Republic: **native**

Ecological indicator values

Ellenberg-type indicator values

Light indicator value: **7 - half-light plant, mostly occurring at full light, but also in the shade up to about 30% of diffuse radiation incident in an open area**

Temperature indicator value: **5 - moderate heat indicator, occurring from lowland to montane belt, mainly in submontane-temperate areas**

Moisture indicator value: **8 - transition between values 7 and 9**

Reaction indicator value: **7 - indicator of slightly acidic to slightly basic conditions, never occurring in very acidic conditions**

Nutrient indicator value: **8 - pronounced nutrient indicator**

Salinity indicator value: **0 - not salt tolerant, glycophyte**

Indicator values for disturbance

Whole-community disturbance frequency indicator value: **-1.07**

Herb layer disturbance frequency indicator value: **-0.5**

Whole-community disturbance severity indicator value: **0.41**

Herb layer disturbance severity indicator value: **0.41**

Whole-community structure based disturbance indicator value: **0.37**

Herb layer structure-based disturbance indicator value: **0.4**

Habitat and sociology

Occurrence in habitats

2 Alpine and subalpine grasslands

2B Subalpine tall-forb and tall-grass vegetation: **1 - rare occurrence**

4 Wetland and riverine herbaceous vegetation

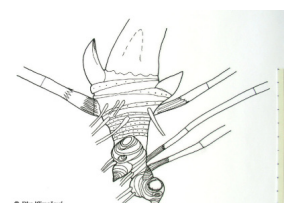
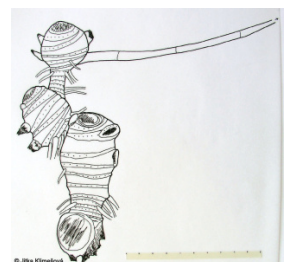
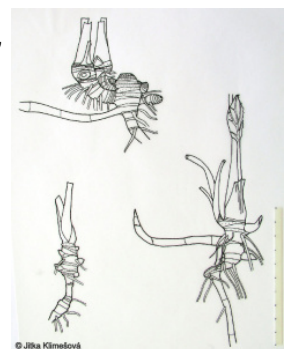
4D Riverine reed vegetation: **3 - dominant**

4E Reed vegetation of brooks: **1 - rare occurrence**

4G Tall-sedge beds: **1 - rare occurrence**

4I Vegetation of nitrophilous annual hygrophilous herbs: **1 - rare occurrence**

4J River gravel banks: **1 - rare occurrence**



4K Petasites fringes of montane brooks: **3 - dominant**

4L Nitrophilous herbaceous fringes of lowland rivers: **1 - rare occurrence**

5 Vegetation of springs and mires

5A Hard-water springs with tufa formation: **1 - rare occurrence**

5B Lowland to montane soft-water springs: **1 - rare occurrence**

5D Calcareous fens: **1 - rare occurrence**

6 Meadows and mesic pastures

6E Wet Cirsium meadows: **1 - rare occurrence**

11 Heathlands and scrub

11J Willow galleries of loamy and sandy river banks: **2 - optimum**

11R Scrub and pioneer woodland of forests clearings: **1 - rare occurrence**

12 Forests

12B Alluvial forests: **2 - optimum**

13 Anthropogenic vegetation

13E Perennial nitrophilous herbaceous vegetation of mesic sites: **3 - dominant**

13F Herbaceous vegetation of forests clearings and Rubus scrub: **1 - rare occurrence**

Affinity to the forest environment

Affinity to the forest environment in Thermophyticum: **2.2 - taxon occurring partly in the forest, but mainly in open vegetation**

Affinity to the forest environment in Mesophyticum and Oreophyticum: **2.2 - taxon occurring partly in the forest, but mainly in open vegetation**

Diagnostic taxon

Diagnostic taxon of classes: [XD Galio-Urticetea](#)

Diagnostic taxon of alliances: [KAB Salicion elaeagno-daphnoidis](#), [XDB Petasition hybridi](#)

Diagnostic taxon of associations: [KAB01 Salicetum elaeagno-purpureae](#), [KAB02 Salicetum purpureae](#), [XDB01 Petasitetum hybridi](#)

Constant taxon

Constant taxon of alliances: [KAB Salicion elaeagno-daphnoidis](#), [XDB Petasition hybridi](#)

Constant taxon of associations: [KAB02 Salicetum purpureae](#), [XDB01 Petasitetum hybridi](#)

Dominant taxon

Dominant taxon of associations: [XDB01 Petasitetum hybridi](#)

Ecological specialization indices

Ecological specialization index for all vegetation types: **4.6**

Ecological specialization index for non-forest vegetation: **4.7**

Ecological specialization index for forest vegetation: **5.6**

Colonization ability

Index of colonization success (ICS): **3**

Index of colonization potential (ICP): **2**

Optimum successional age [years]: **17.5**

Distribution and frequency

Floristic zone: **northern temperate, southern temperate, submeridional, meridional**

Floristic region: **Europe**

Continentality degree: **5**

Distribution range extension along the continentality gradient: **3**

Elevational belt in the Czech Republic: **lowlands, colline belt, submontane belt, montane belt**

Expansive taxon in the region: **Bohemian Moravian Mesophyticum, Bohemian Moravian Oreophyticum, Carpathian Mesophyticum, Carpathian Oreophyticum**

Occurrence frequency in the basic grid mapping cells and quadrants of the basic grid mapping cells: **539**

taxon.data.freq_in_quad: **1395**

Commonness in vegetation plots from the Czech Republic

Occurrence frequency in vegetation plots: **1.1 %**

Occurrence frequency in vegetation plots with a cover above 5%: **73.5 %**

Occurrence frequency in vegetation plots with a cover above 25%: **64.6 %**

Occurrence frequency in vegetation plots with a cover above 50%: **54.5 %**

Mean percentage cover in vegetation plots: **48.4 %**

Maximum percentage cover in vegetation plots: **99 %**

Number of habitats with taxon occurrence in the Czech Republic

Number of narrow habitats in which the taxon occurs: **17**

Number of narrow habitats in which the taxon has its optimum: **5**

Number of broad habitats in which the taxon occurs: **7**

Number of broad habitats in which the taxon has its optimum: **4**

Threats and protection

Red List 2017 (national categories): **taxon is not on the Red List**

Red List 2017 (IUCN categories): **LC(NA) - least concern (taxon is not on the Red List)**

Legal protection: **not protected by law**