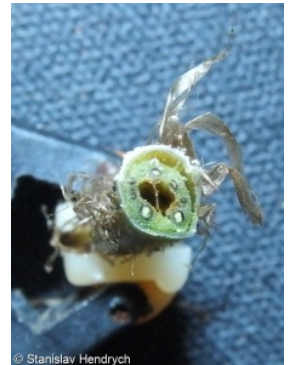
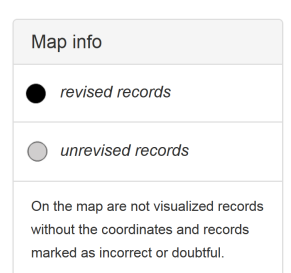
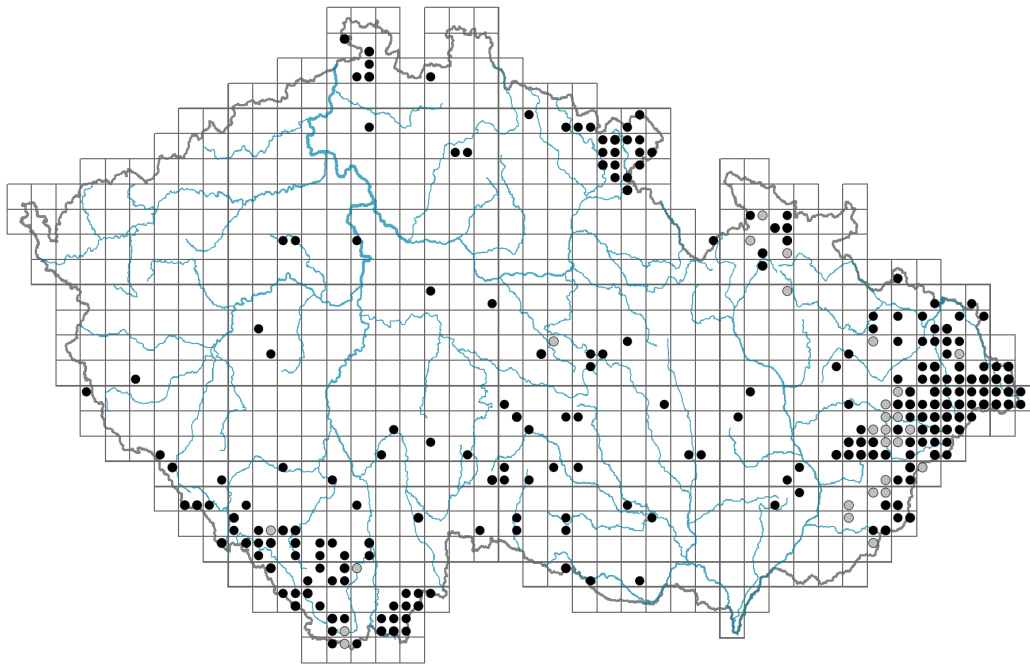


Dryopteris borrieri

Distribution



Habitus and growth type

Height [m]: **0.3-1.2**

Growth form: **clonal herb**

Life form: **hemicryptophyte**

Leaf

Leaf presence and metamorphosis: **leaves present, not modified**

Leaf arrangement (phyllotaxis): **rosulate**

Leaf shape: **compound - bipinnate**

Stipules: **absent**

Petiole: **present**

Flower

Flowering period [month]: **July-September**

Fruit, seed and dispersal

Dispersal unit (diaspore): **spore**

Dispersal strategy: **Lycopodium (mainly anemochory)**

Myrmecochory: **non-myrmecochorous (b)**

Trophic mode

Parasitism and mycoheterotrophy: **autotrophic**

Carnivory: **non-carnivorous**

Symbiotic nitrogen fixation: **no nitrogen-fixing symbionts**



Taxon origin

Origin in the Czech Republic: **native**



Ecological indicator values

Ellenberg-type indicator values

Light indicator value: **3 - shade plant, usually occurring where the incident radiation is less than 5% of that in an open area, but also at sunnier sites**

Temperature indicator value: **4 - transition between values 3 and 5**

Moisture indicator value: **6 - transition between values 5 and 7**

Reaction indicator value: **4 - transition between values 3 and 5**

Nutrient indicator value: **5 - occurring at moderately nutrient-rich sites, and less frequently at poor and rich sites**

Salinity indicator value: **0 - not salt tolerant, glycophyte**



Habitat and sociology

Affinity to the forest environment

Affinity to the forest environment in Mesophyticum and Oreophyticum: **1.1 - taxon occurring mainly in the closed forest**

Colonization ability

Index of colonization success (ICS): **1**

Distribution and frequency

Elevational belt in the Czech Republic: **submontane belt, montane belt (colline belt)**

Occurrence frequency in the basic grid mapping cells and quadrants of the basic grid mapping cells: 151

taxon.data.freq_in_quad: 260

Threats and protection

Red List 2017 (national categories): **C3 - vulnerable taxon**

Red List 2017 (IUCN categories): **NT - near threatened**

Legal protection: **not protected by law**